

duztaş

refrigeration



PRODUCT CATALOG **2026**

www.duztas.com





SERVEOVER COUNTERS

NOVA

ORBIT

VECTOR

STRATOS

CRYO

GLACIA

LUMO

NOVA

SERVE OVER COUNTER FOR MEAT, SAUSAGES AND DELICATESSEN

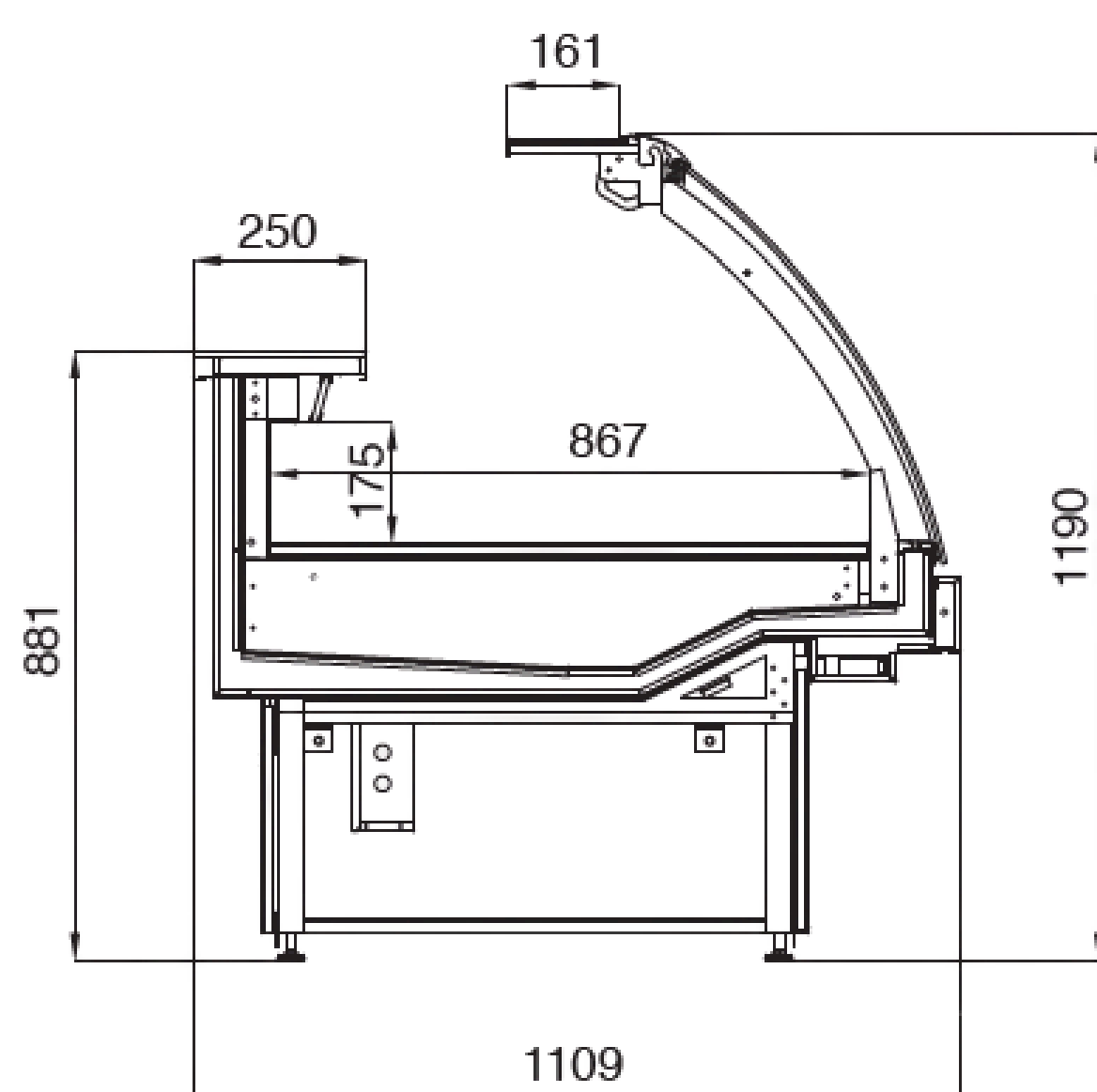


Plug-in or remote versions
 Ventilated refrigeration
 Bain marie and Hot plate version
 Front square lifting securit glass
 Stainless steel working plate
 860 mm. Stainless steel display
 area
 Adjustable angled plates
 Anticondensing ventilation
 Stainless steel evaporator basin

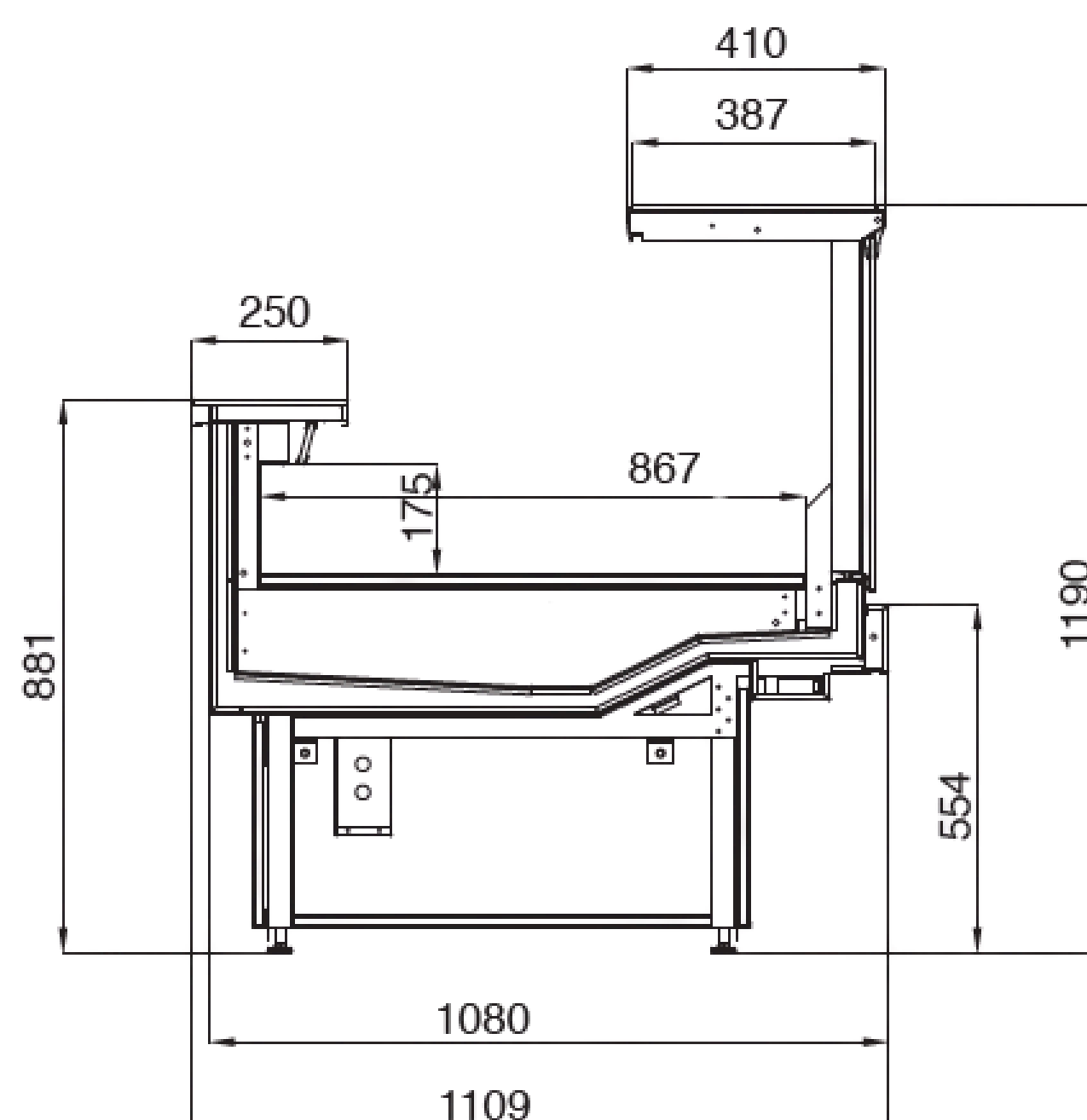
OPTIONAL ACCESSORIES:
 Variable color options or wooden
 applications for decoration
 Column or closed decor
 application
 Ergonomic design for easy
 loading
 Vaiable front glass versions
 PVC bumper for protection

Cabinet length without endwalls (mm)	937	1250	1875	2500	3750
Display area (m ²)	0.8	1.07	1.61	2.15	3.22
Operating voltage	230 V/50 Hz				
Working temperature	0 / +2 °C		+3 / +5 °C		

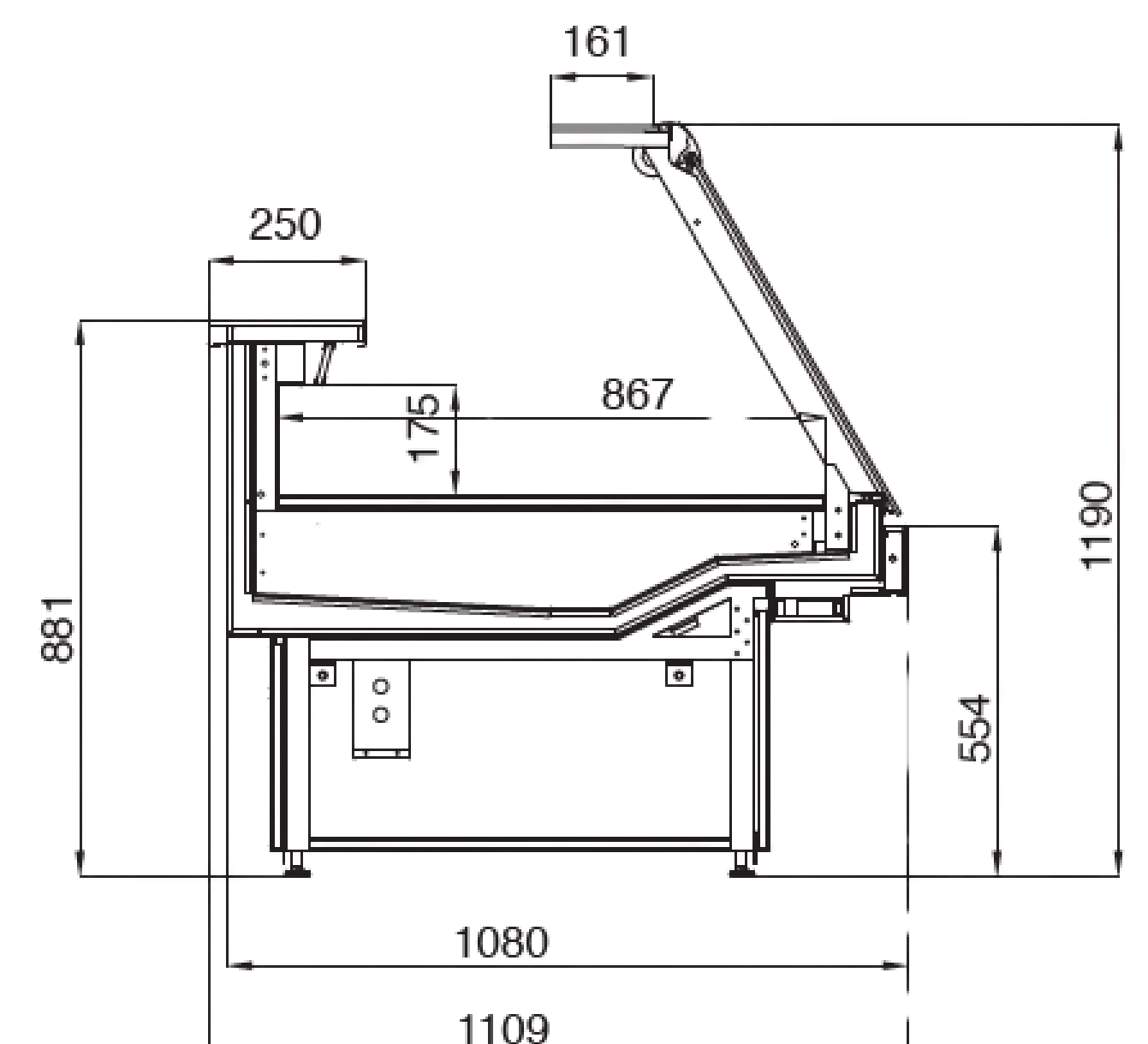
NOVA LC



NOVA LV



NOVA LA



ORBIT

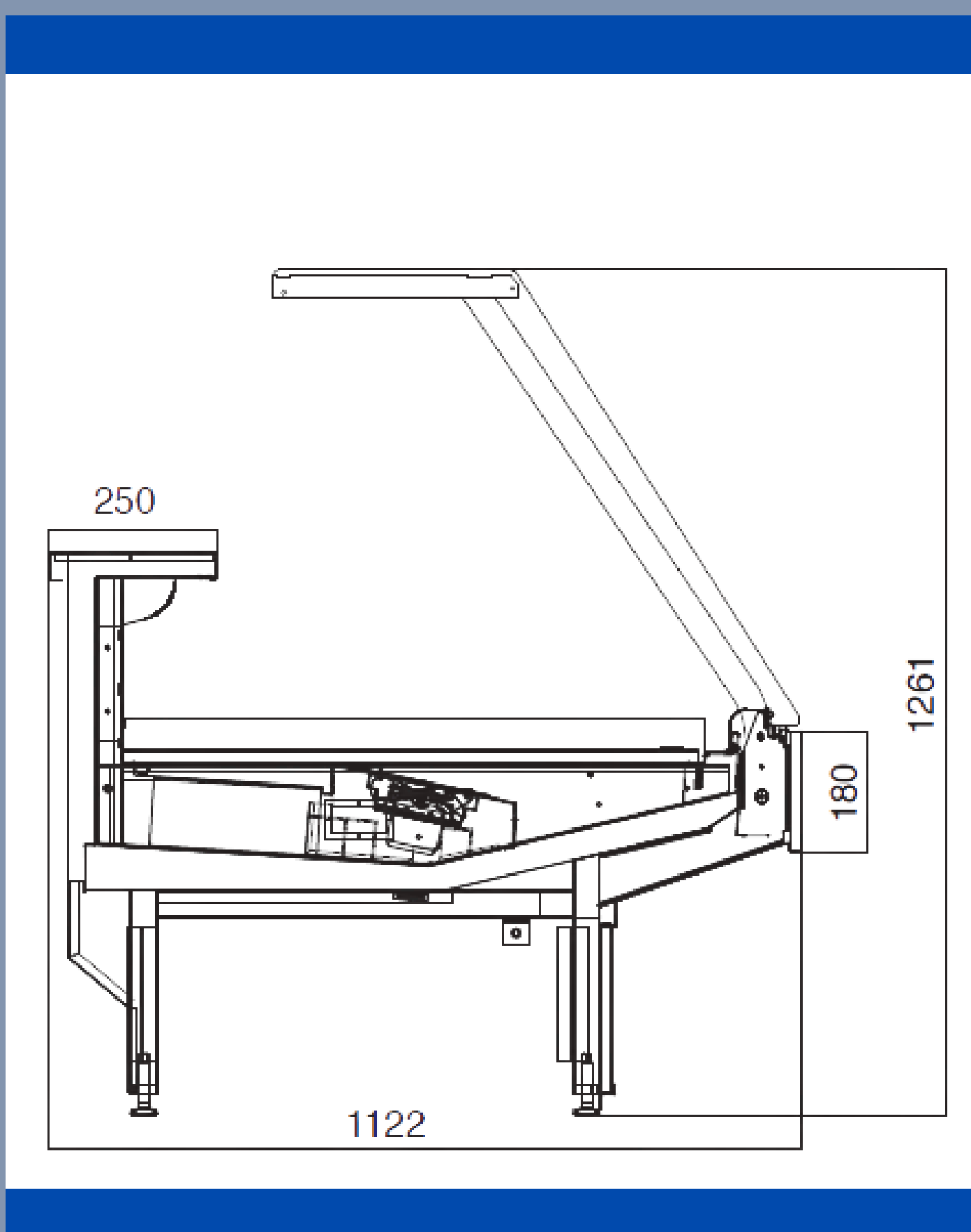
SERVE OVER COUNTER FOR MEAT, SAUSAGES AND DELICATESSEN



- Plug-in or remote versions
- Ventilated refrigeration
- Upward-opening tempered front glass
- Front square lifting security glass
- Stainless steel working plate
- 860 mm. Stainless steel display area
- Adjustable angled plates
- Anticondensing ventilation
- Stainless steel evaporator basin

OPTIONAL ACCESSORIES:

- Variable color options or wooden applications for decoration
- Column or closed decor application
- Ergonomic design for easy loading



Cabinet length without endwalls (mm)	937	1250	1875	2500
Display area (m ²)	0.8	1.07	1.61	2.15
Operating voltage	230 V/50 Hz			
Working temperature	0 / +2 °C		+3 / +5 °C	

VECTOR

SERVE OVER COUNTER FOR MEAT, SAUSAGES AND DELICATESSEN

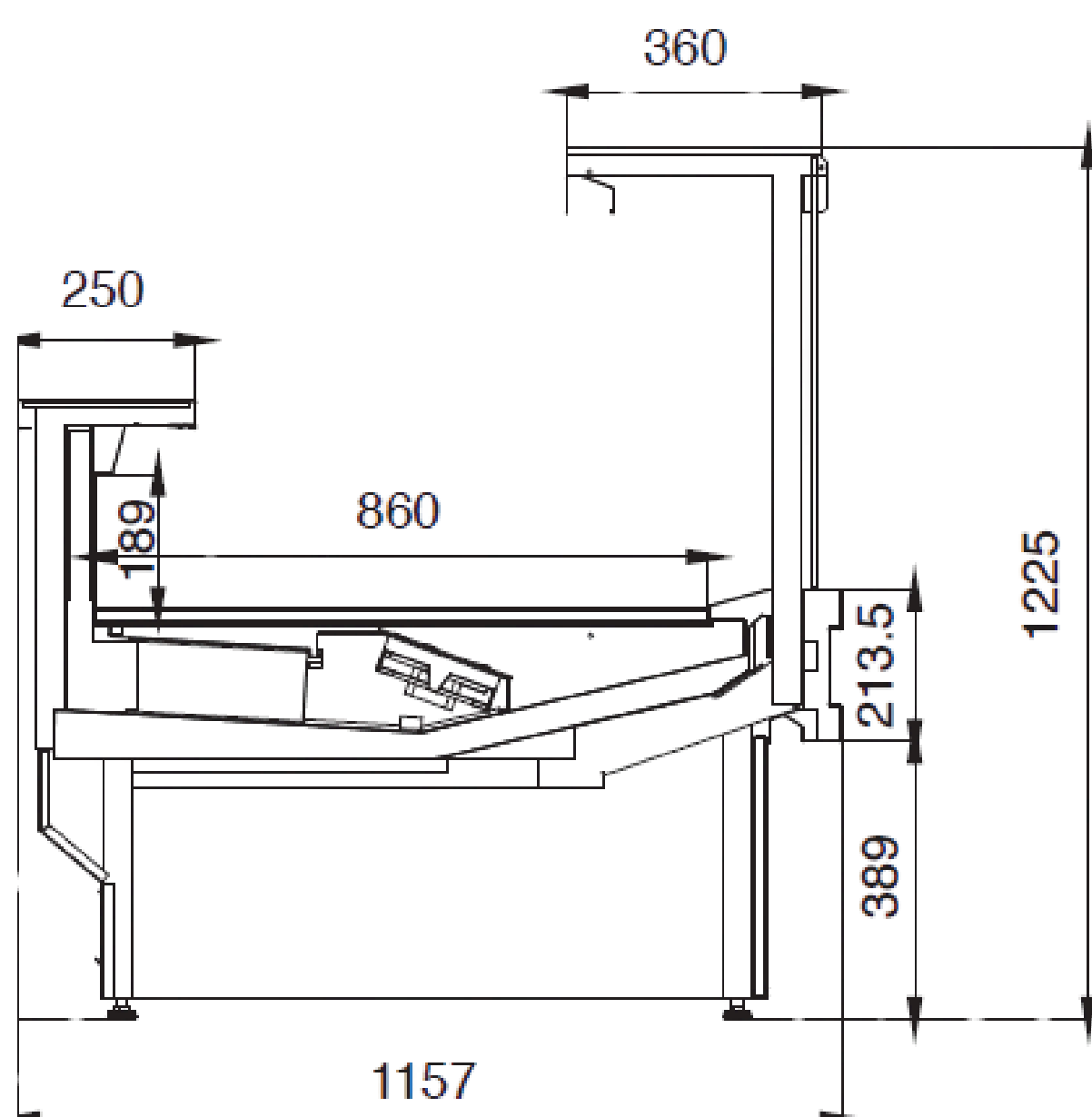


Plug-in or remote versions
 Ventilated refrigeration
 Bain marie and Hot plate version
 Front square lifting securit glass
 Stainless steel working plate
 860 mm. Stainless steel display
 area
 Adjustable angled plates
 Anticondensing ventilation
 Stainless steel evaporator basin

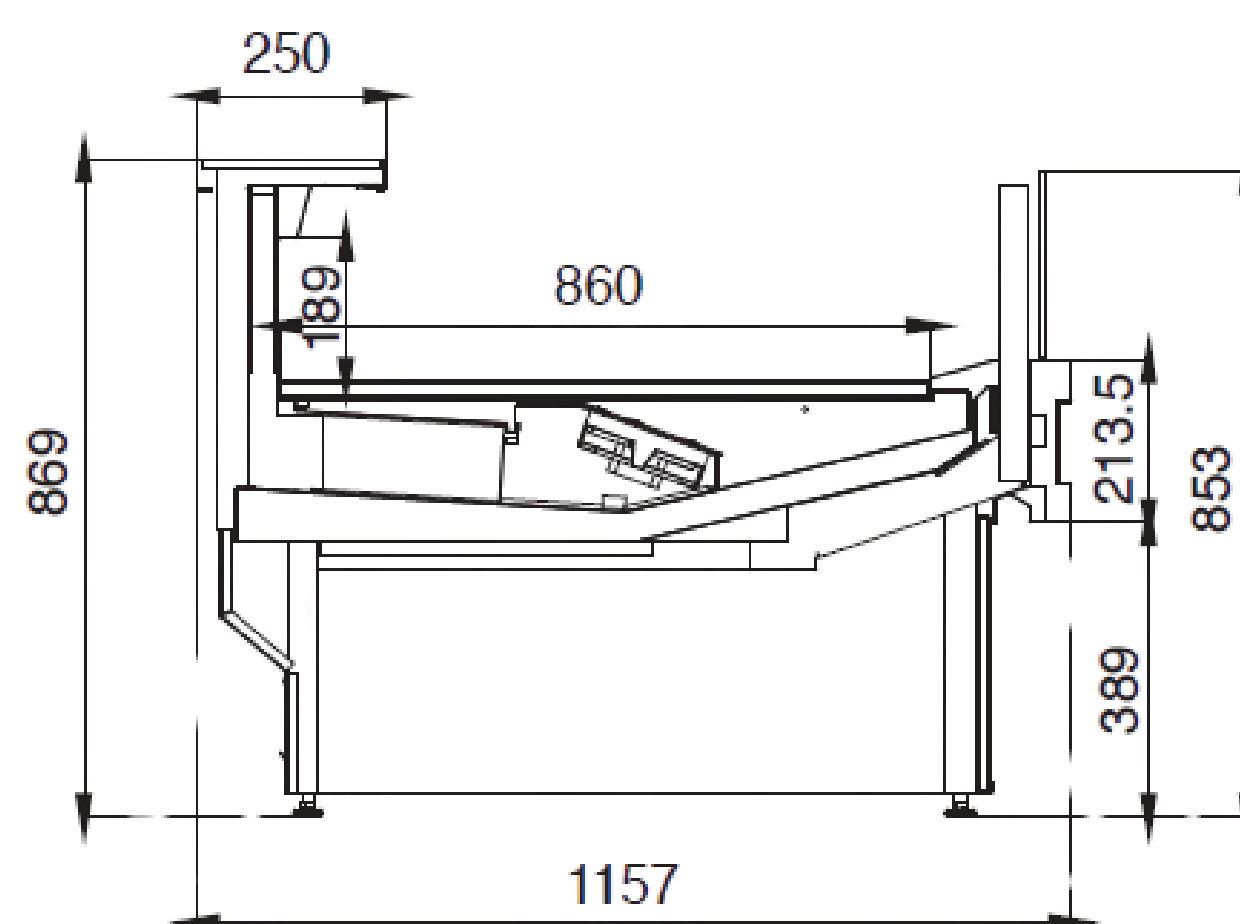
OPTIONAL ACCESSORIES:
 Variable color options or wooden
 applications for decoration
 Coloumn or closed lower decor
 application
 Ergonomic design for easy
 loading

Cabinet length without endwalls (mm)	937	1250	1875	2500	3750
Display area (m ²)	0.8	1.07	1.61	2.15	3.22
Operating voltage	230 V/50 Hz				
Working temperature	0 / +2 °C		+3 / +5 °C		

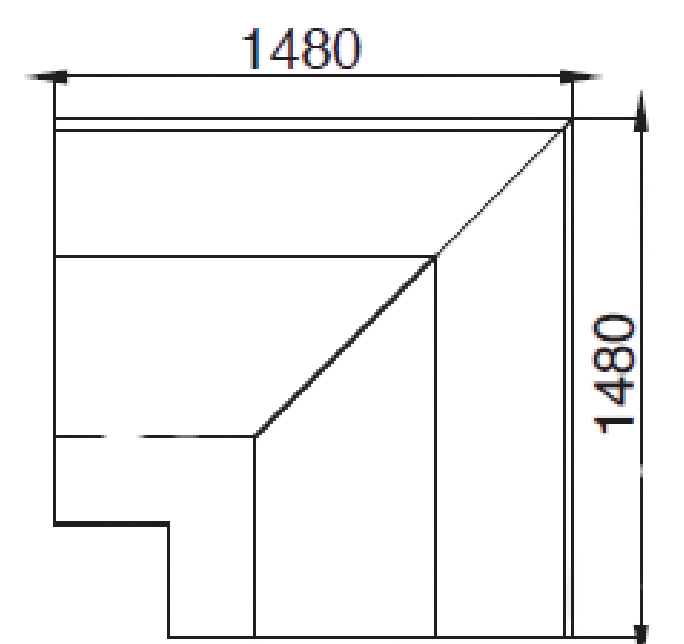
VECTOR



SELF-SERVICE



VECTOR CORNER



STRATOS

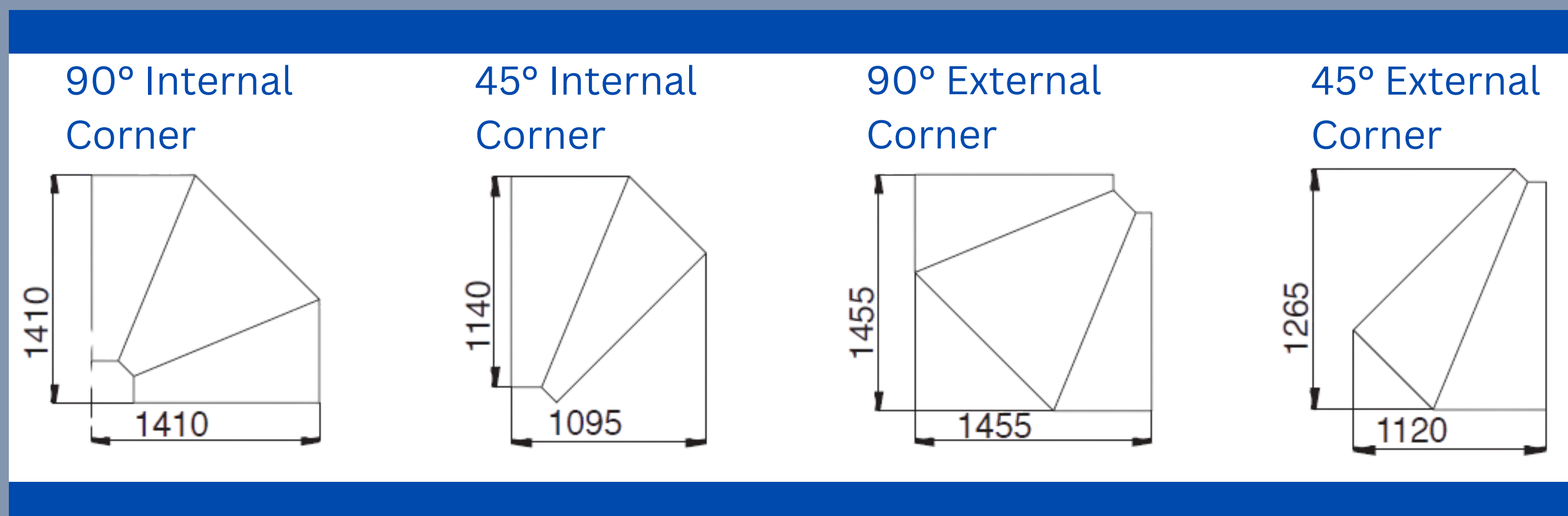
SERVE OVER COUNTER FOR MEAT, SAUSAGES AND DELICATESSEN



Plug-in or remote versions
Bain Marie and Hot Plate versions
Ergonomic design with front glass support which eases the operators ability to move
860 mm. stainless steel display
Upward opening tempered front glass makes the loading of the goods, cleaning and the maintenance of the cabinet easier
Adjustable display trays

Stainless steel working plate
Fan assisted refrigeration
Stainless steel evaporator basin
PVC bumper for protection
RAL color choices for decoration
Column leg or closed decor application

Cabinet length without endwalls (mm)	937	1250	1875	2500	3750
Display area (m ²)	0.8	1.07	1.61	2.15	3.22
Net Weight	105	131	192	244	315
Operating voltage	230 V/50 Hz				
Working temperature	0 / +2 °C		+3 / +5 °C		

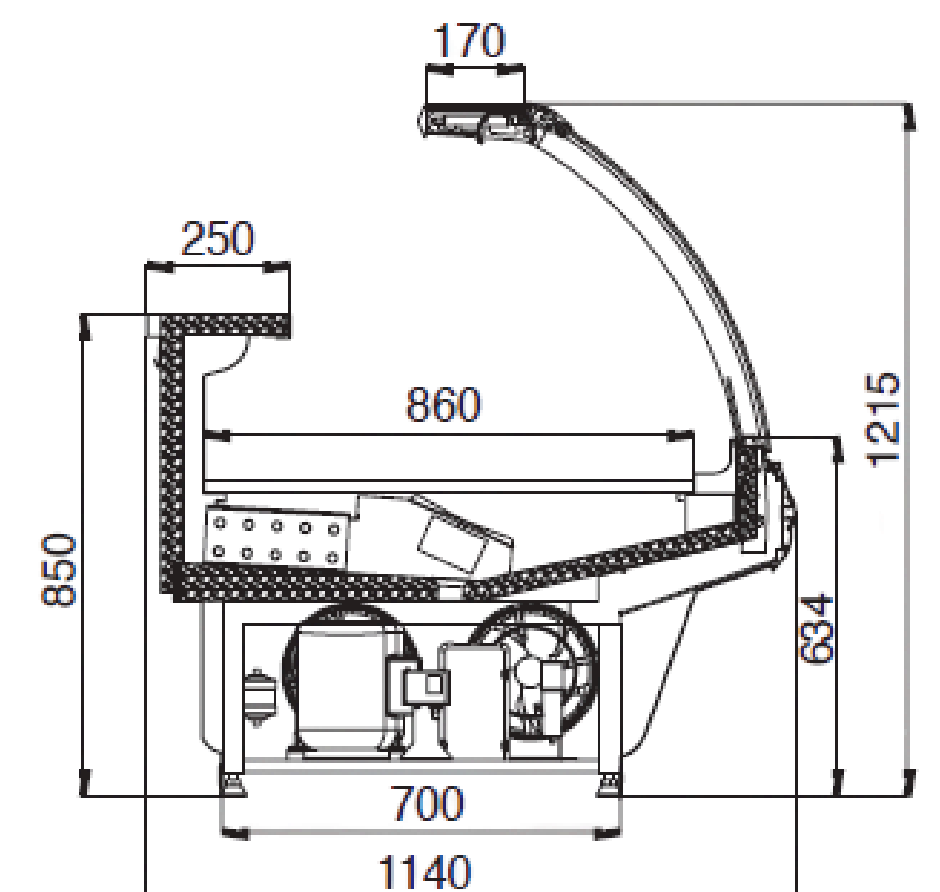
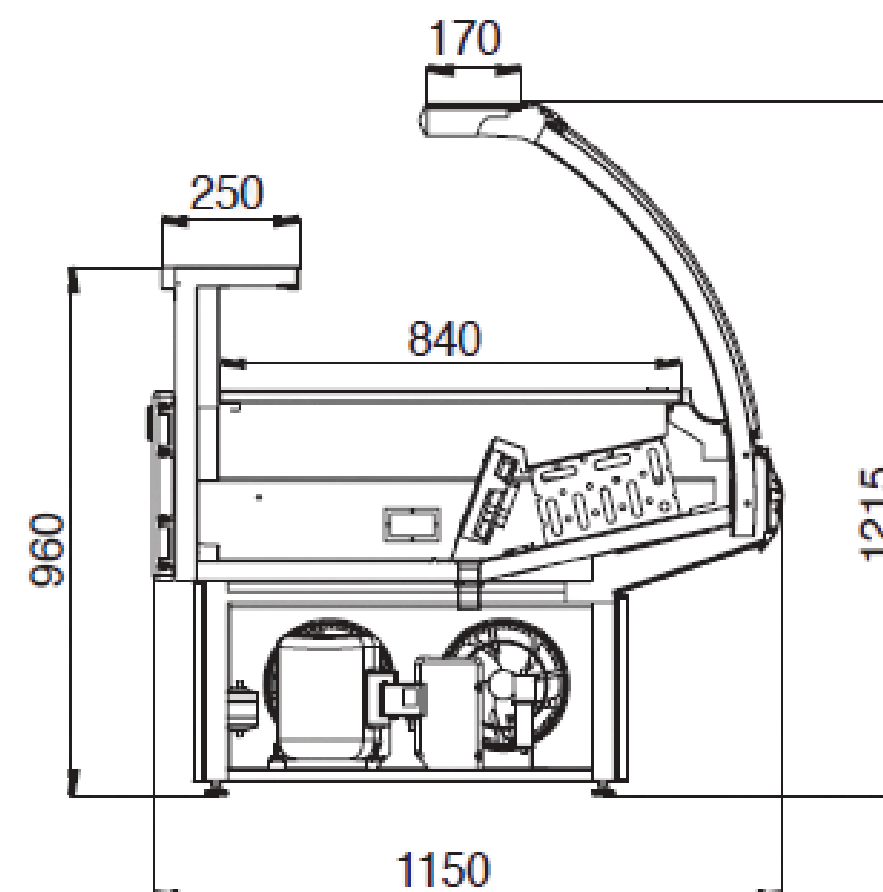
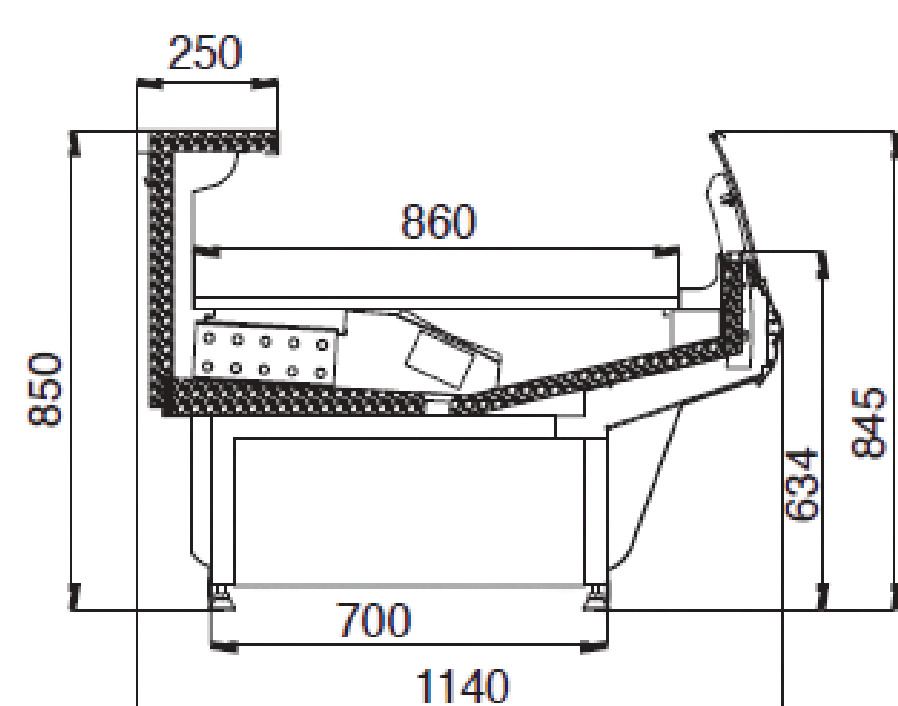
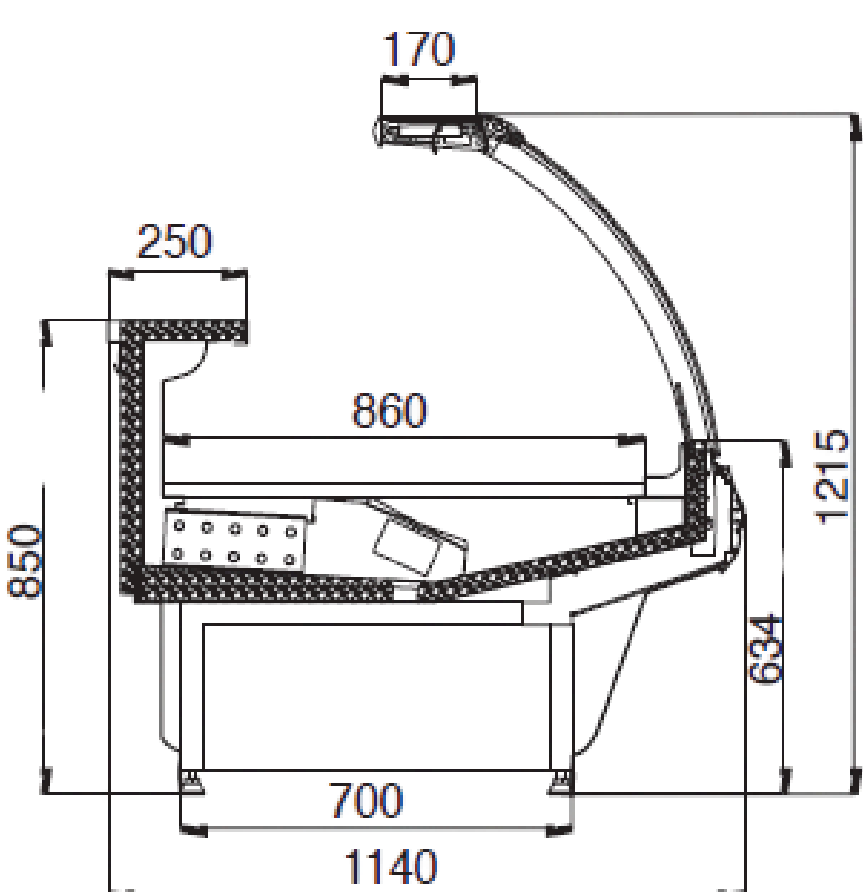


STRATOS (LIFT GLASS)

SELF-SERVICE

PLUG-IN (WITH STORAGE)

WITHOUT STORAGE



CRYO

PASTRY DISPLAY CASES



Plug-in or remote versions

Serve over the counter for pastry and bakery products

Refrigerated or non-refrigerated versions

Easy cleaning of the glass through a downward-opening glass

Ergonomic design of the sliding door cabinet at the back of the cabinet

Stainless steel base tray and two layers of glazed display shelves

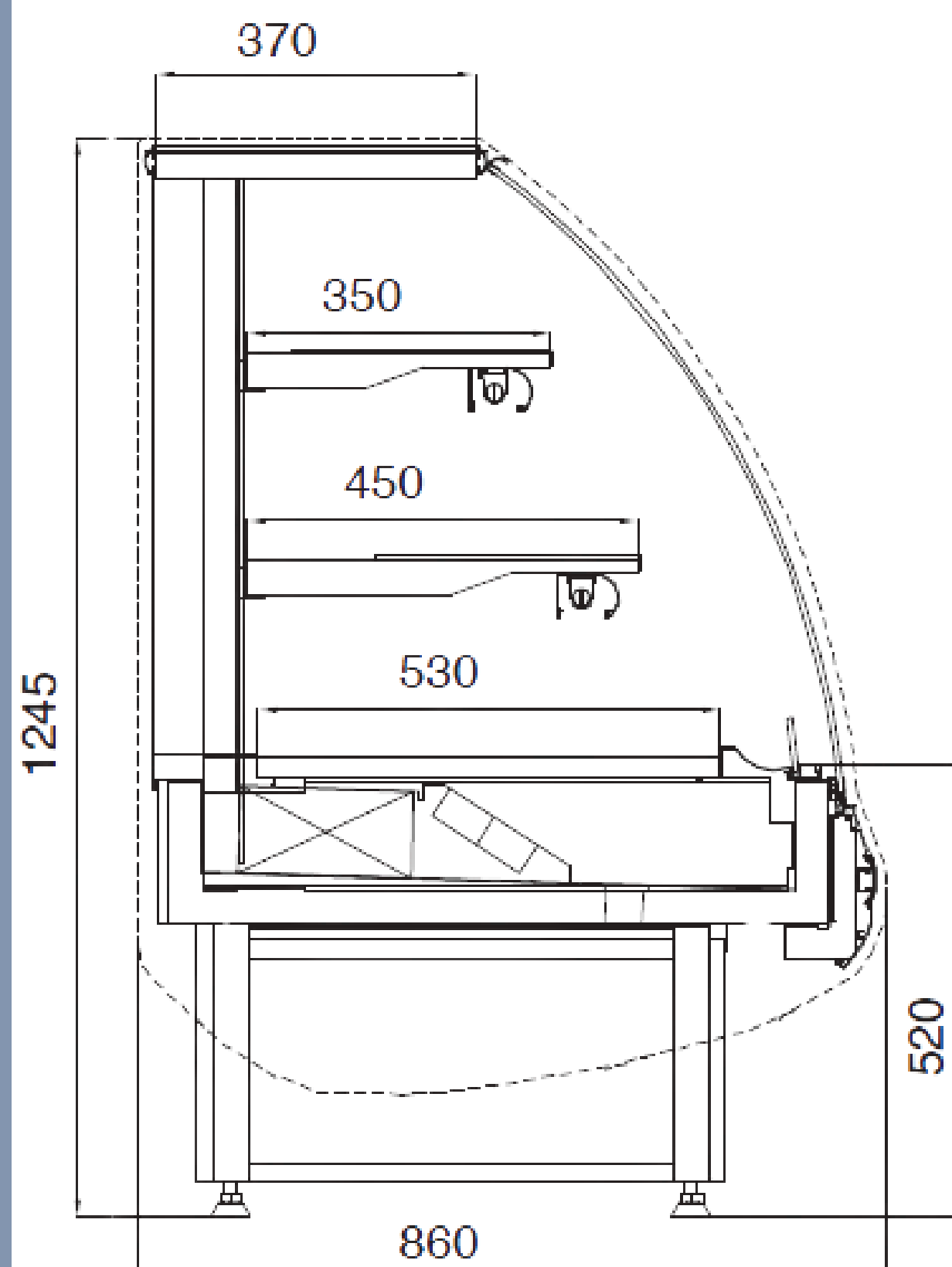
Glazed workbench on the case

Ventilated refrigeration

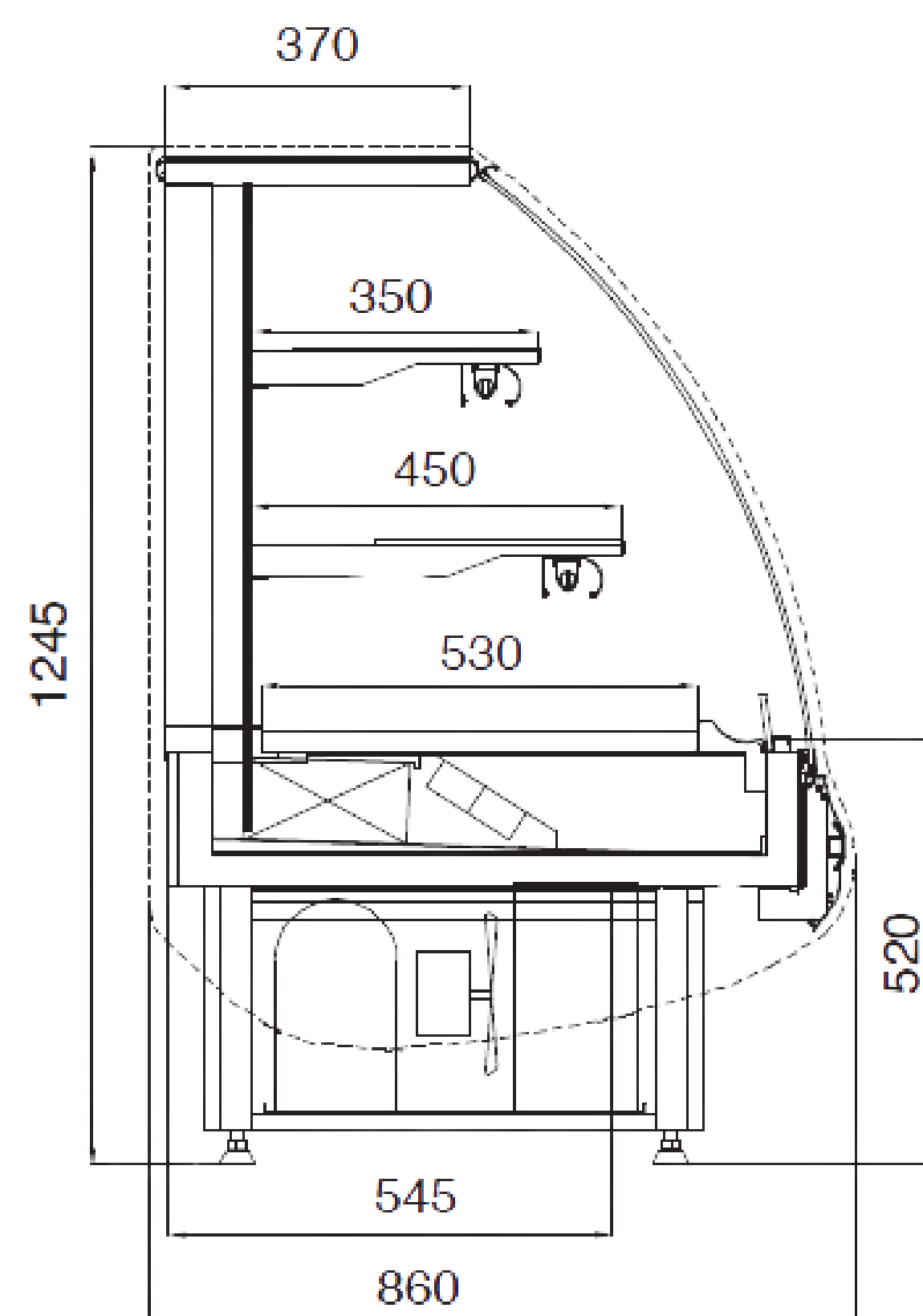
Optional wooden front panel

Cabinet length without endwalls	(mm)	900	1800	2700
Display area (m²)	pastry	1.35	2.70	4.05
	bakery	1.25	2.50	3.75
Net weight	pastry	165	260	355
	bakery	100	180	260
Working temperature	pastry	+3 / +6 °C		
	bakery	+35 / +45 °C		
Operating voltage		230 V/50 Hz		

CRYO



PLUG-IN



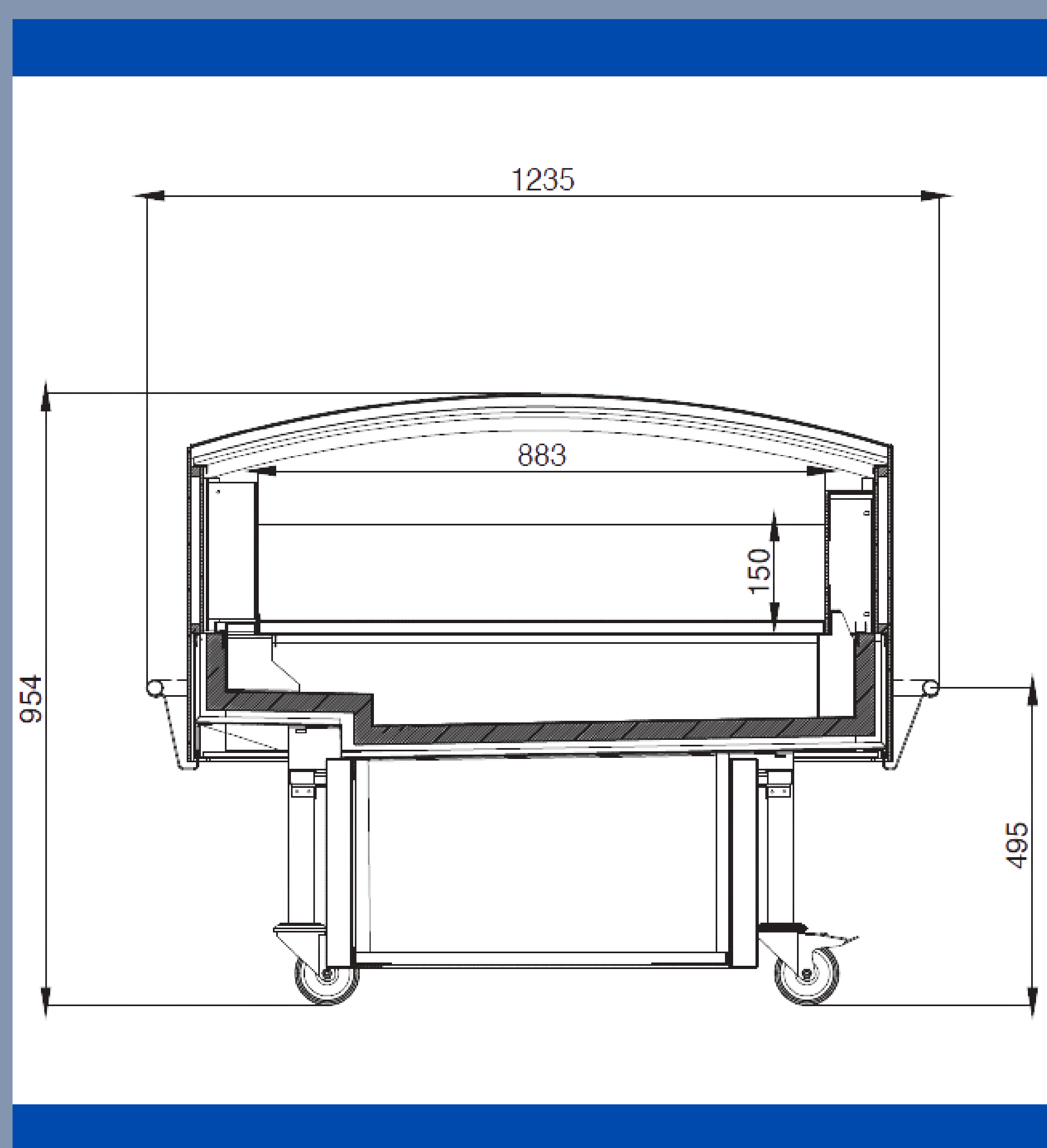
GLACIA

PLUG-IN CABINET FOR PROMOTIONAL PRODUCTS



Highly mobile with integrated wheels
Increased loading capacity
Modern design and functional details
Cabinet construction built to highest quality standards
Stainless steel interior
Variable color options

Dimensions exc. bumper (mm)	1100 x 1100
Dimensions inc. bumper (mm)	1235 x 1235
Class (according to EN23953-2)	3M1
Temperature Range	0 / + 2 °C
TDA (according to EN23953-2)	0,90
Volume (dm ³)	130
DEC (according to EN23953-2) (kW)	10,08



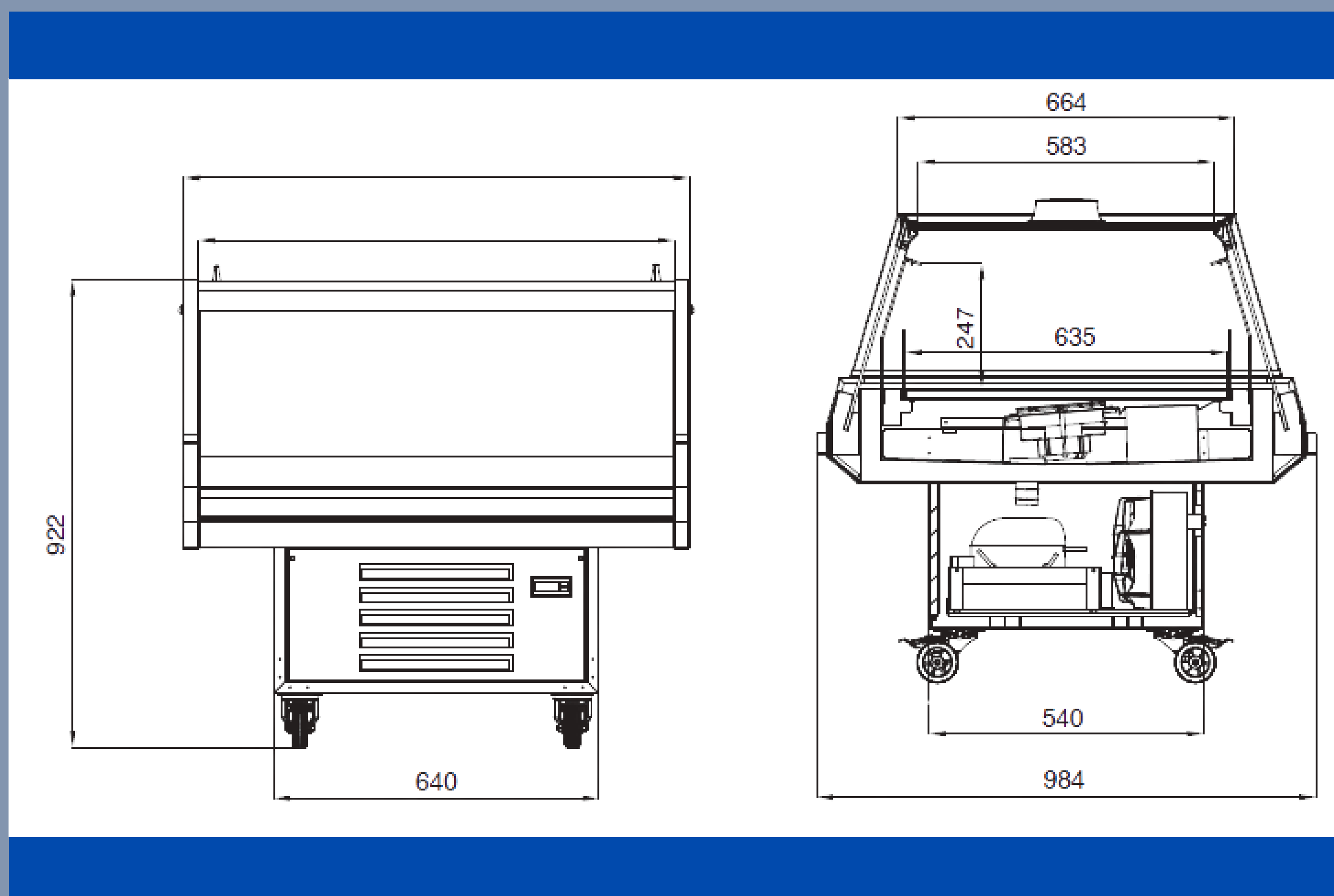
LUMO

PLUG-IN CABINET FOR PROMOTIONAL PRODUCTS



Highly mobile with integrated wheels
 Modern design and functional details
 Cabinet construction built to highest quality standards
 Stainless steel interior
 Variable color options

Cabinet length without endwalls (mm)	1000x1000
Display area (m²)	0.6
Operating voltage	230 V/50 Hz
Working temperature	+2 / +4 °C



Polyethylene trencher platform



Knives holder



Paper holder



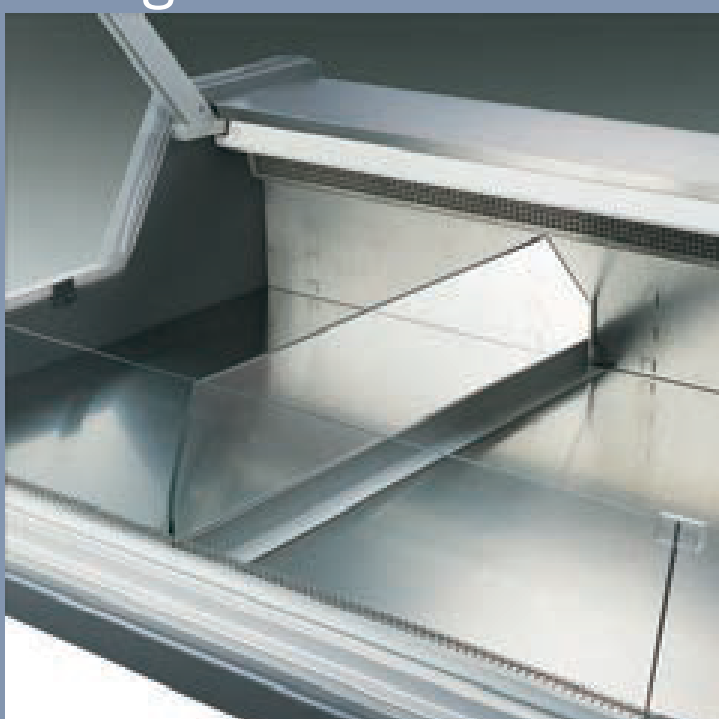
Scale machine carrier



Paper roll holder



Low glass divider



Moveable stainless steel display deck



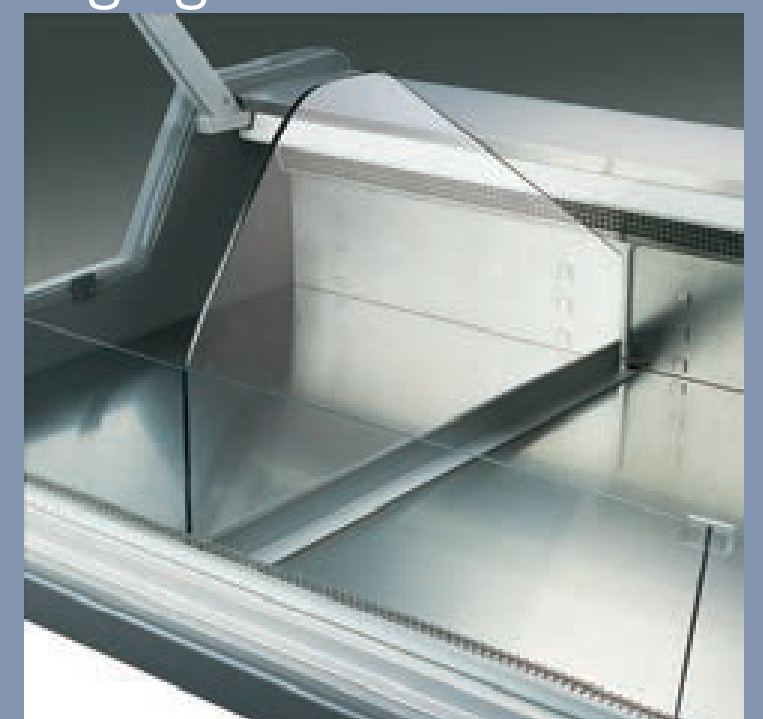
Display grid



Olives, pickles



High glass divider



SERVEOVER ACCESSORIES



MULTITIDECK CABINET

NEXO

NEXO GLASS DOOR

VORTEX

VENTO

VENTO ANG

NEXO

MULTIDECK CABINET FOR DIARY, MEAT, FRUIT AND VEGETABLE PRODUCTS



Remote cabinet
Wide display area due to the low front base
High refrigeration output, low energy consumption
PVC bumper for cabinet protection
Equal air flow between display shelves
RAL color choices as per customer request

OPTIONAL ACCESSORIES:

Internally mirrored or glazed endwalls
Undershelf lighting (T5 or LED)
Electrical or manual night blinds



NEXO GLASS DOOR

MULTIDECK CABINET FOR DIARY, MEAT, FRUIT AND VEGETABLE PRODUCTS



Remote cabinet

Patara Glass Door is manufactured to ensure the maximum energy savings.

According to the customer's needs we can provide single or double glass application.

Double glazed doors consume less energy than the single glazed doors.

For meat applications double glass doors are recommended. Because of the frameless structure of the door the maximum visibility of the products is achieved.

Door glasses are made out of tempered glass.

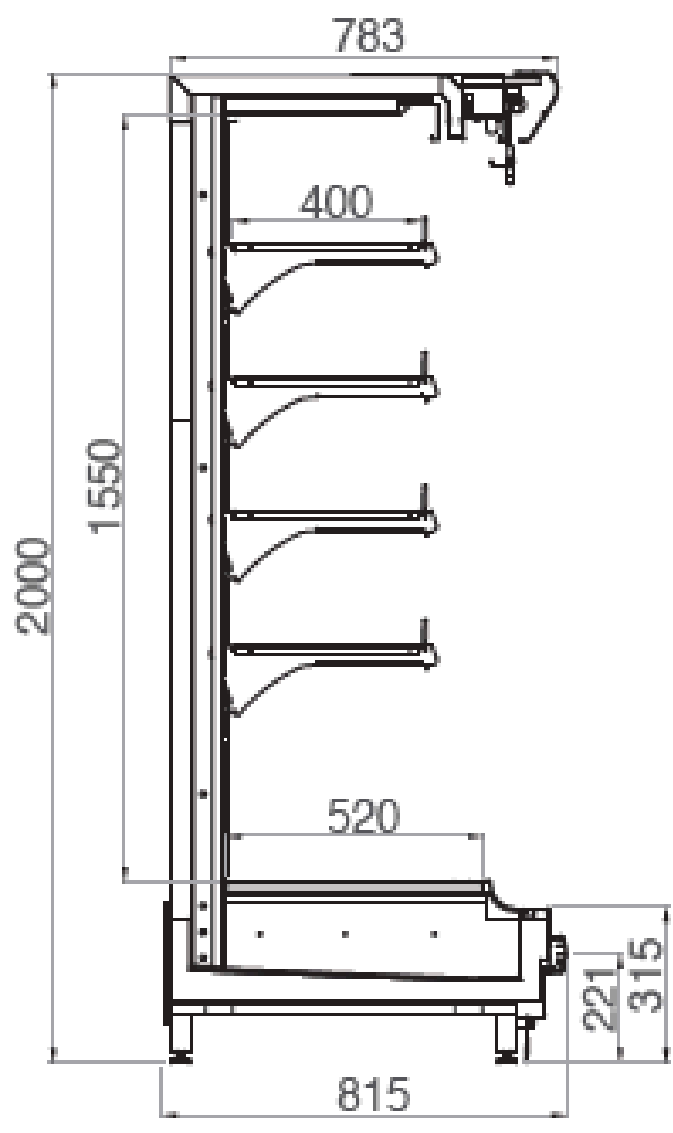
OPTIONAL ACCESSORIES:

Internally mirrored or glazed endwalls

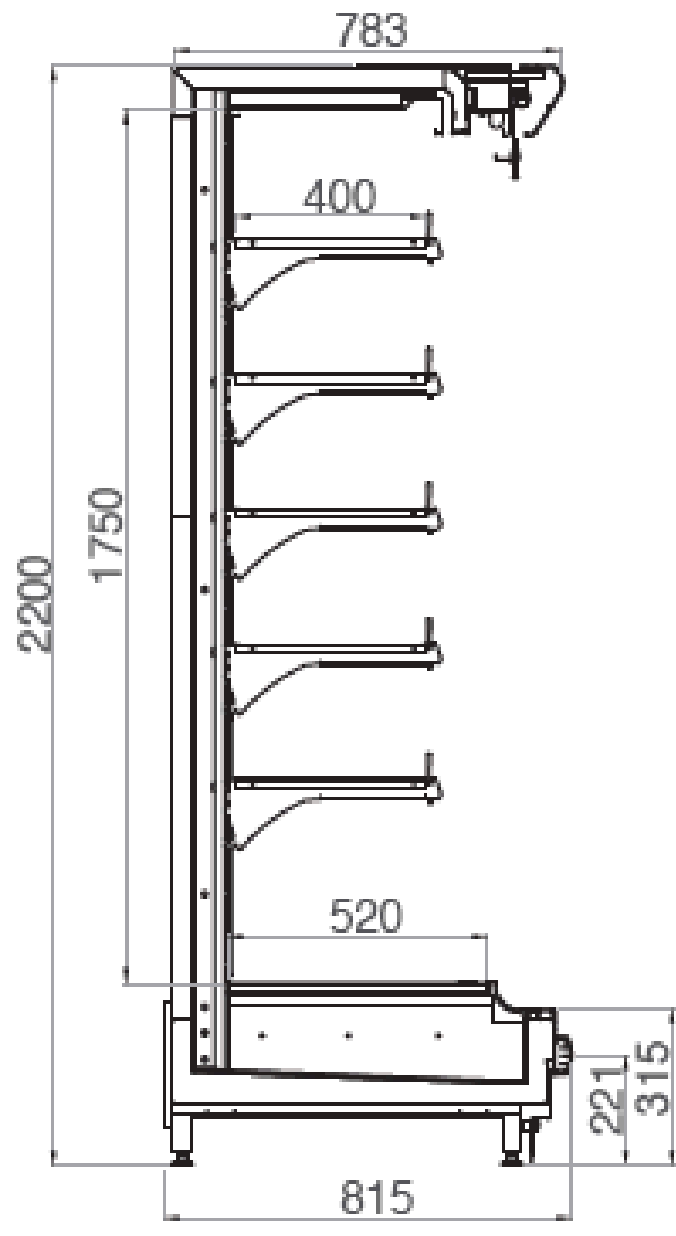
Undershelf lighting (T5 or LED)



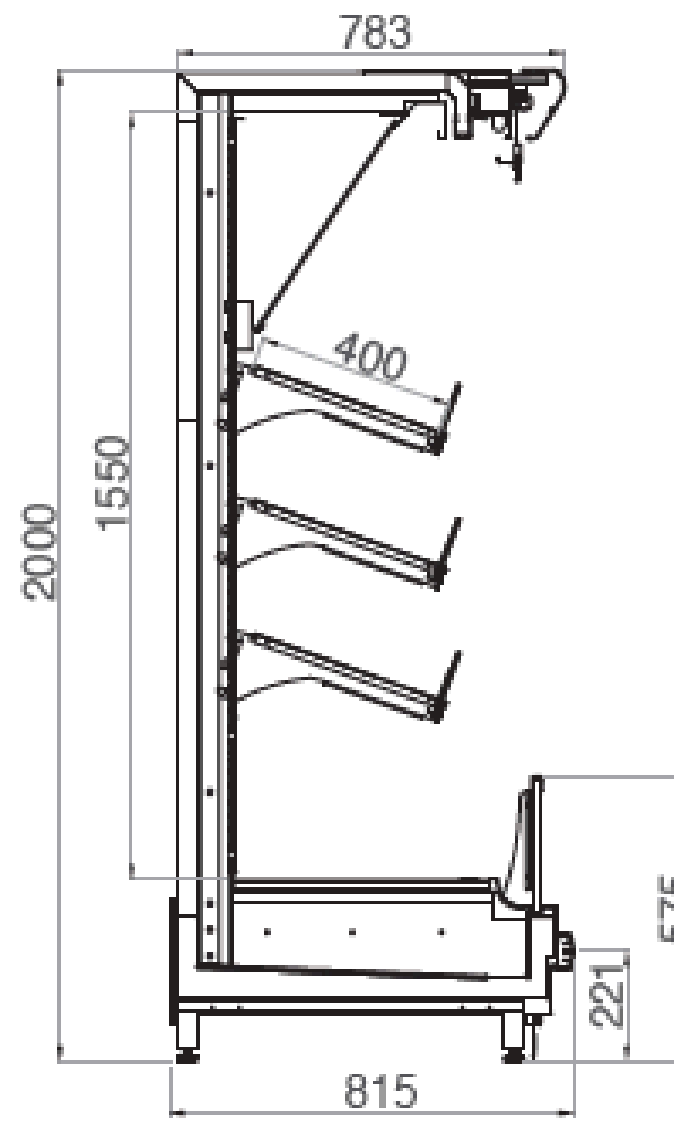
NEXO 80 D



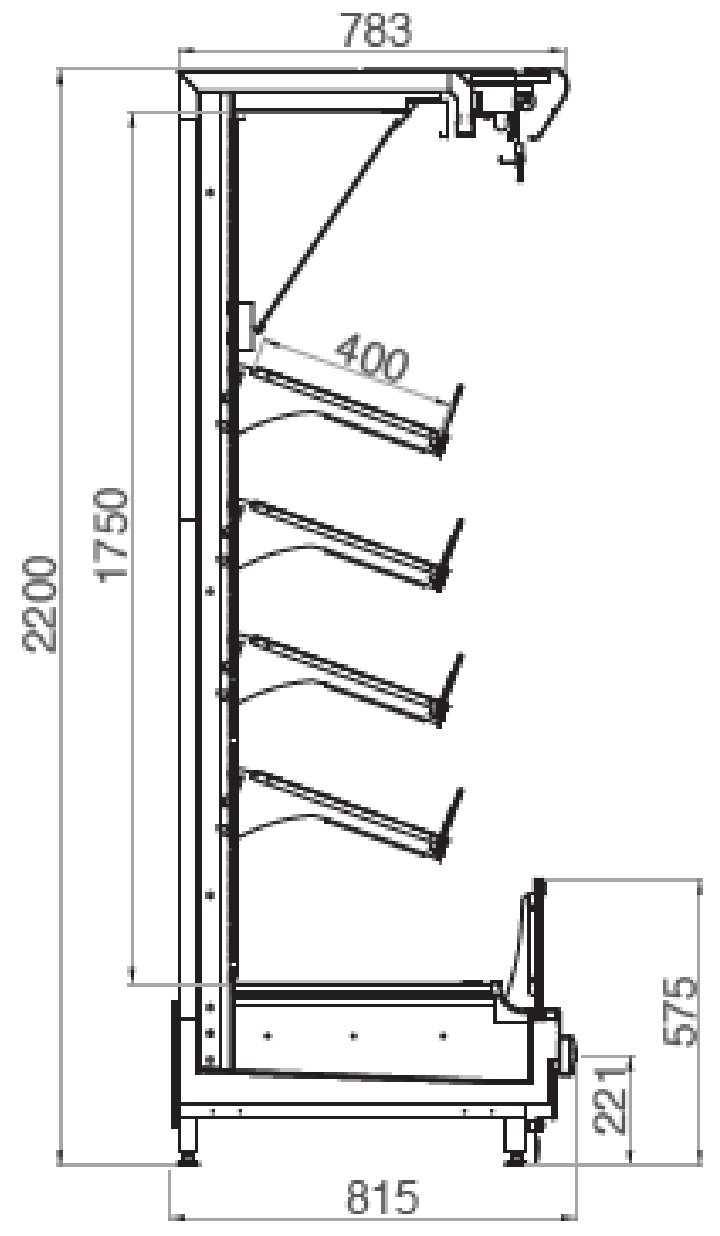
NEXO 80 DL



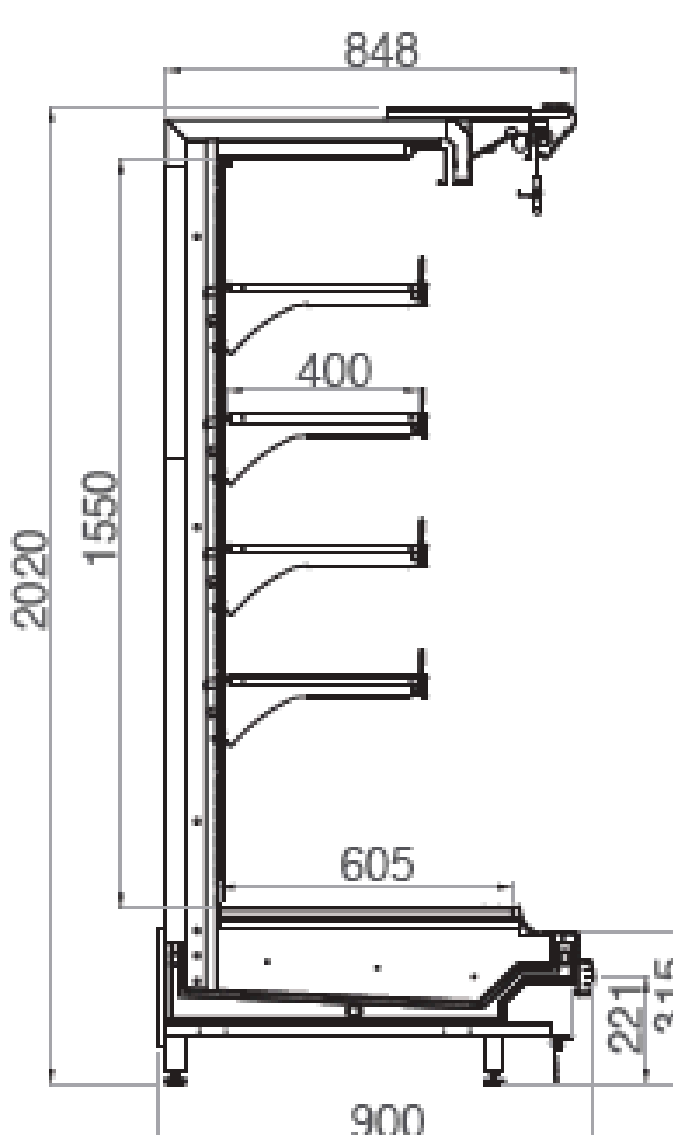
NEXO 80 M



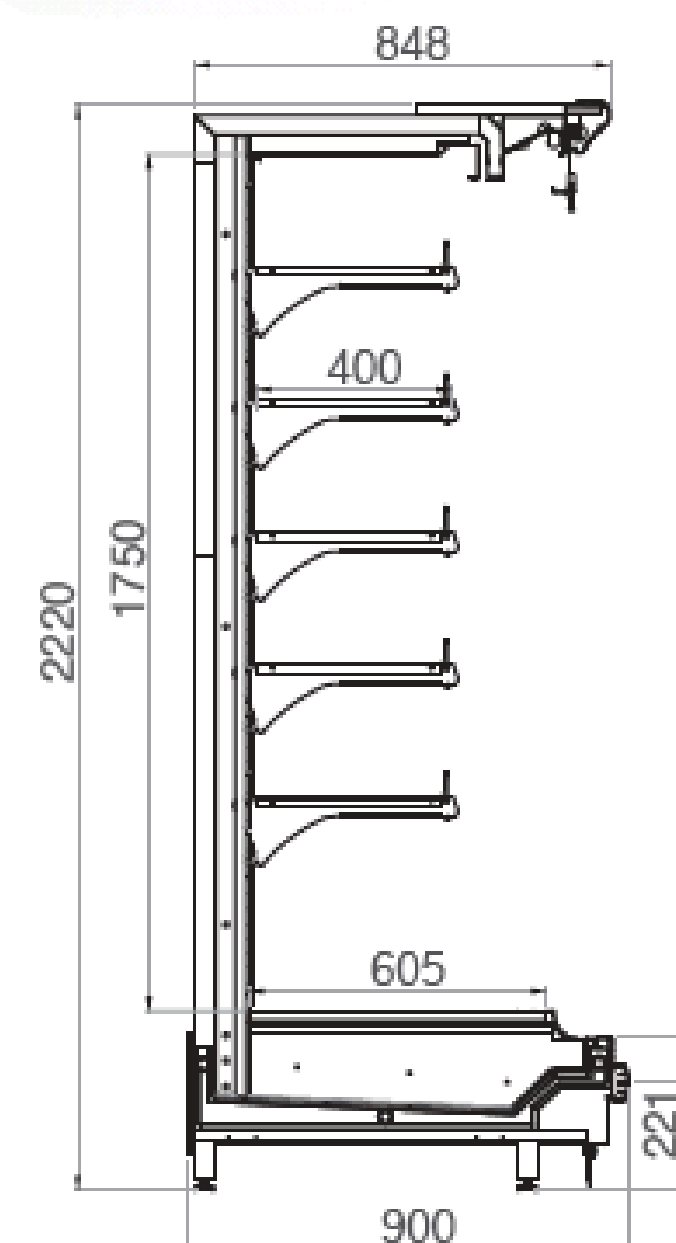
NEXO 80 ML



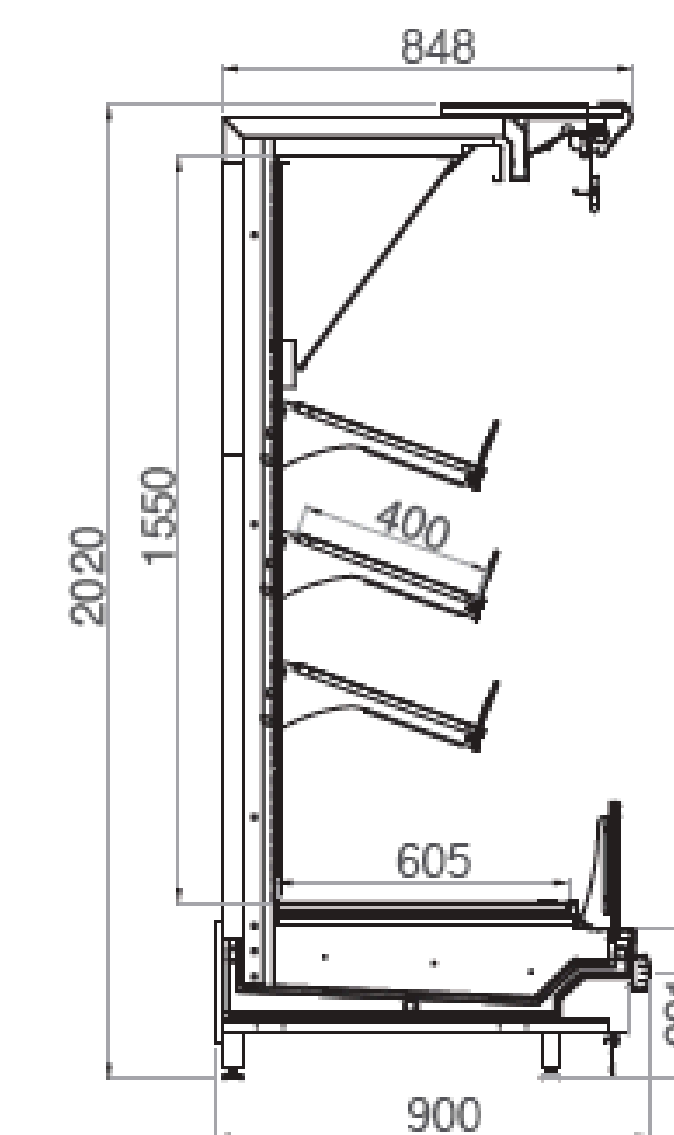
NEXO 90 D



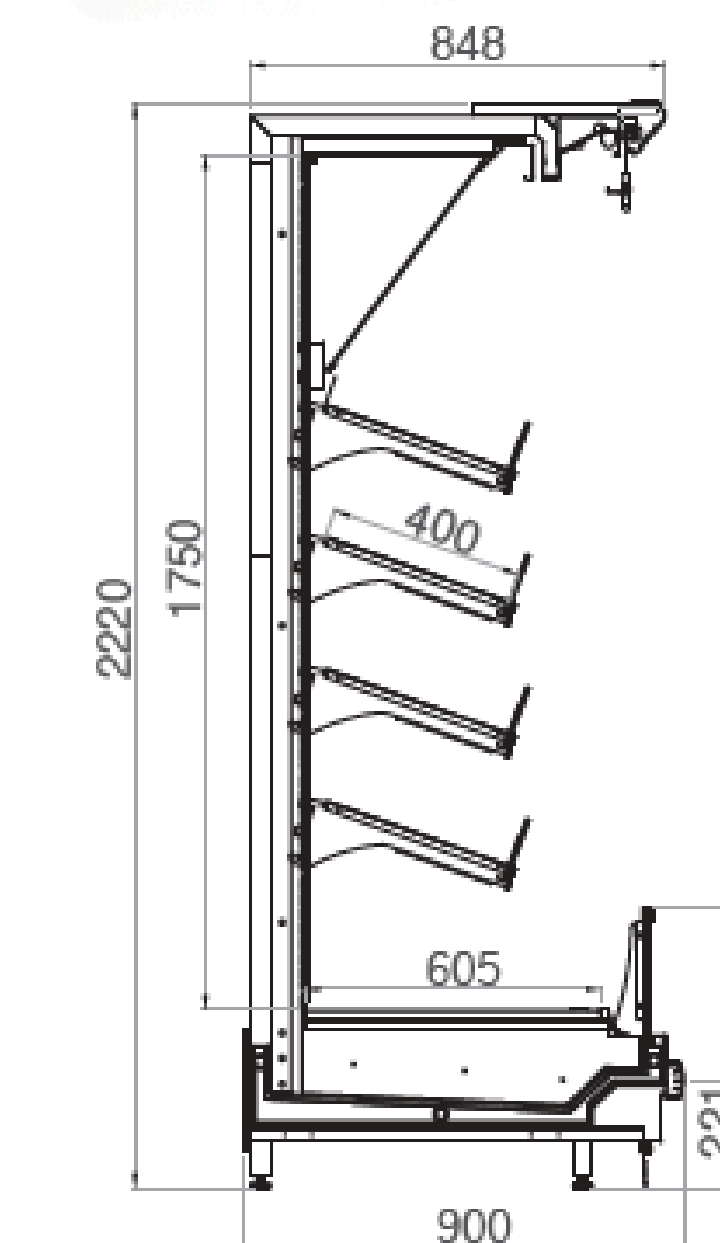
NEXO 90 DL



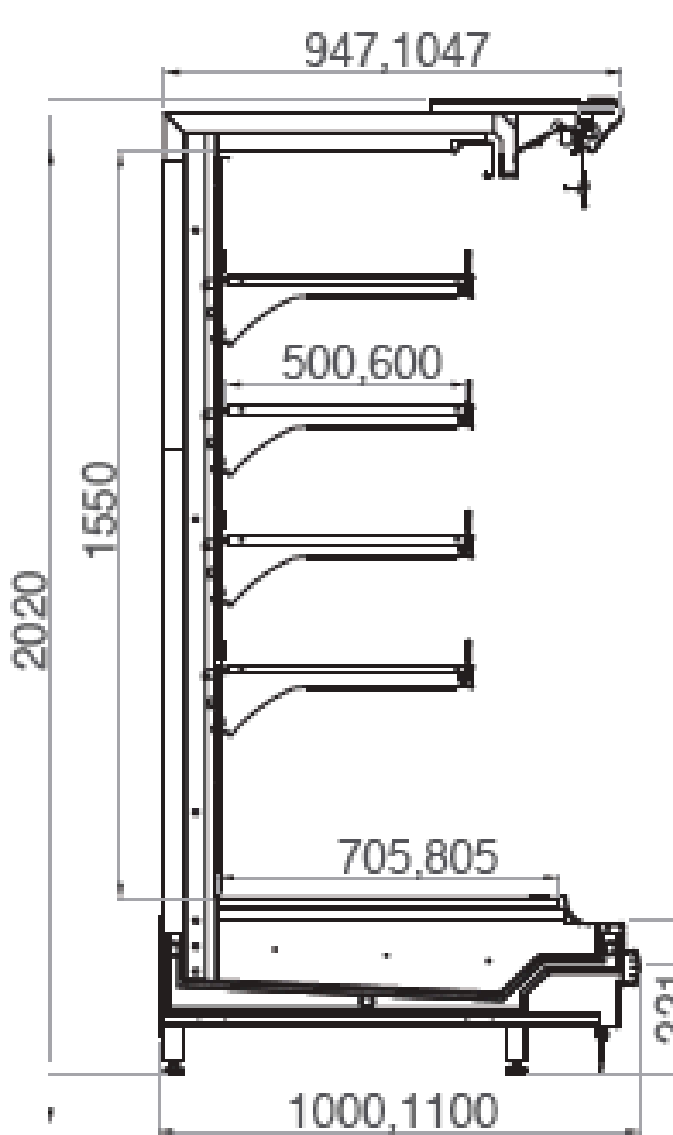
NEXO 90 M



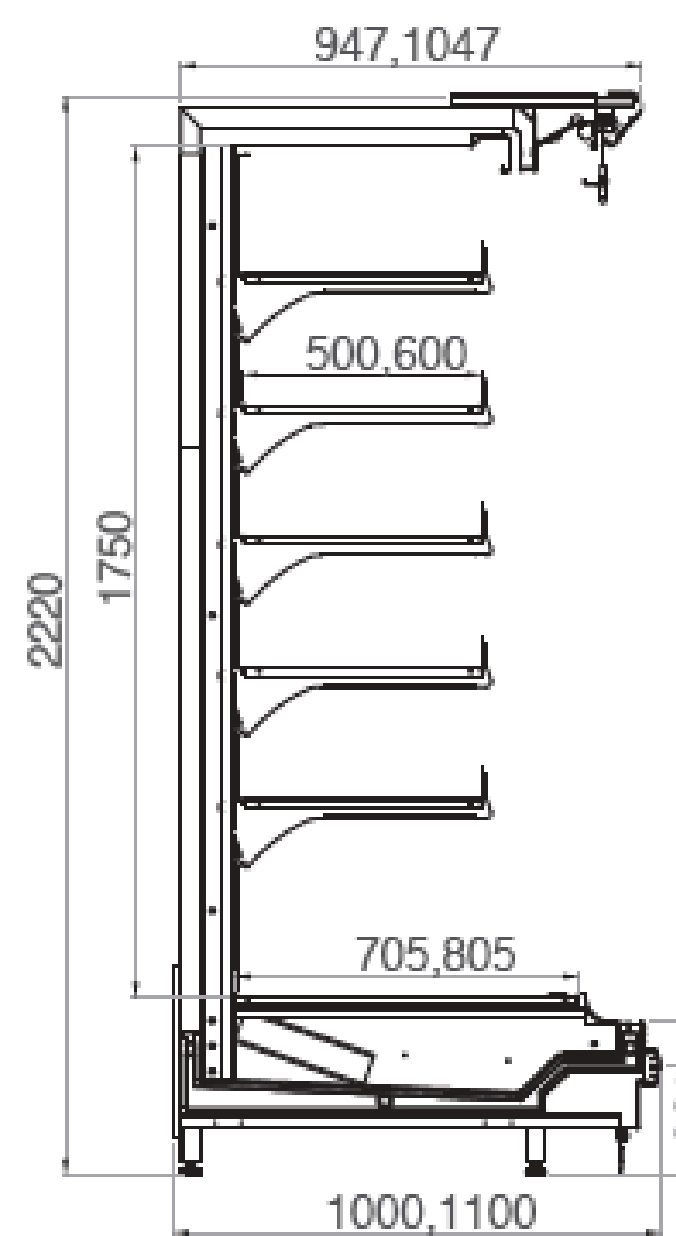
NEXO 90 ML



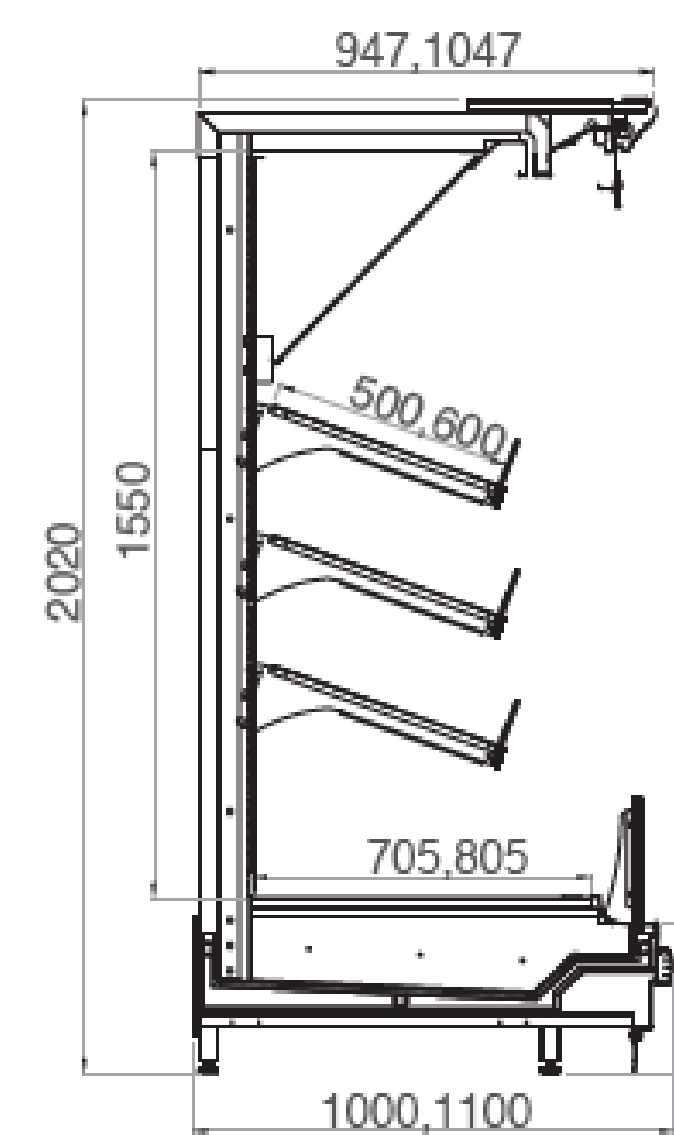
NEXO 100/110 D



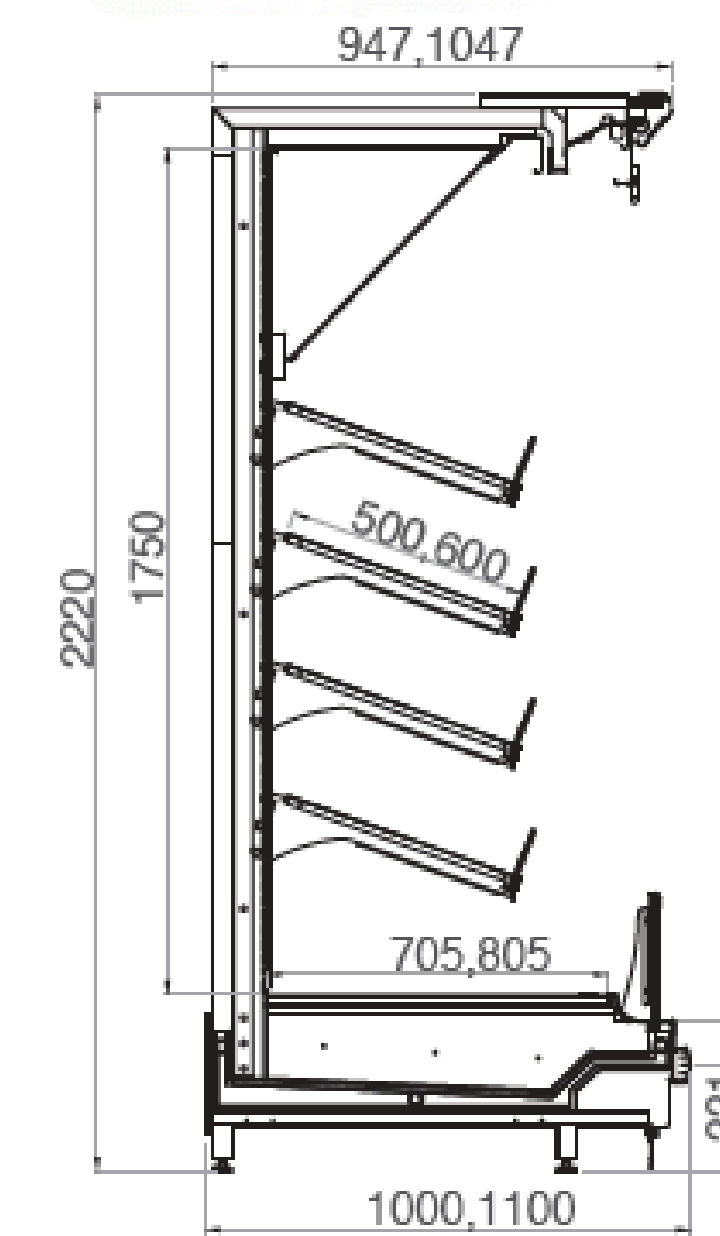
NEXO 100/110 DL



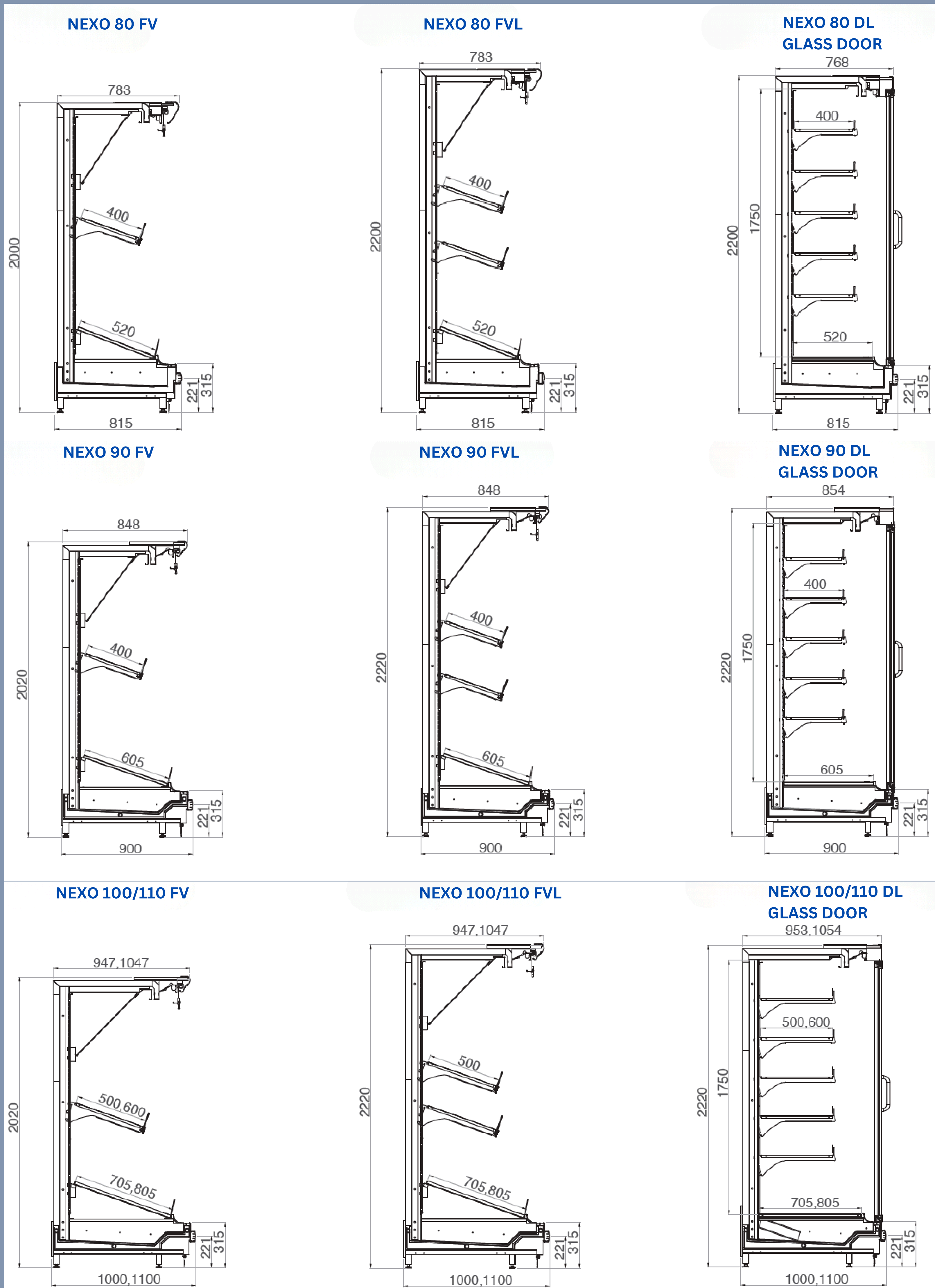
NEXO 100/110 M



NEXO 100/110 ML



Cabinet length without endwalls	937 1250 1875 2500 2811 3750						İK 45°	İK 90°	DK 45°	DK 90°	Working temperature
							IC 45°	IC 90°	EC 45°	EC 90°	
NEXO 80 D	1.99	2.65	3.98	5.30	5.96	7.95	0.96	1.92	0.87	1.74	+2 +4 °C
NEXO 80 DL	2.36	3.15	4.73	6.30	7.08	9.45	1.15	2.29	1.02	2.04	
NEXO 80 M	1.61	2.15	3.23	4.30	4.83	6.45	0.77	1.55	0.72	1.44	
NEXO 80 ML	1.99	2.65	3.98	5.30	5.96	7.95	0.96	1.92	0.87	1.74	
NEXO 80 FV	0.86	1.15	1.73	2.30	2.59	3.45	0.41	0.82	0.42	0.84	+4 +6 °C
NEXO 80 FVL	1.24	1.65	2.48	3.30	3.71	4.95	0.59	1.19	0.57	1.14	
NEXO 80 D	2.07	2.76	4.13	5.51	6.20	8.27	1.10	2.19	0.94	1.88	
NEXO 80 DL	2.44	3.26	4.88	6.51	7.32	9.77	1.30	2.60	1.09	2.18	
NEXO 80 M	1.69	2.26	3.38	4.51	5.07	6.77	0.89	1.78	0.79	1.58	+0 +2 °C
NEXO 80 ML	2.07	2.76	4.13	5.51	6.20	8.27	1.10	2.20	0.94	1.88	
NEXO 80 FV	0.94	1.26	1.88	2.51	2.83	3.77	0.48	0.97	0.49	0.98	
NEXO 80 FVL	1.32	1.76	2.63	3.51	3.95	5.27	0.69	1.38	0.64	1.28	



Cabinet length without endwalls	937	1250	1875	2500	2811	3750	iK 45°	iK 90°	DK 45°	DK 90°	Working temperature
							IC 45°	IC 90°	EC 45°	EC 90°	
NEXO 100 D	2.53	3.38	5.07	6.76	7.60	10.14	1.47	2.94	1.25	2.50	+2 +4 °C
NEXO 100 DL	3.00	4.01	6.01	8.01	9.01	12.02	1.75	3.50	1.46	2.92	
NEXO 100 M	2.07	2.76	4.13	5.51	6.20	8.27	1.19	2.38	1.04	2.08	+0 +2 °C
NEXO 100 ML	2.53	3.38	5.07	6.76	7.60	10.14	1.47	2.94	1.25	2.50	
NEXO 100 FV	1.13	1.51	2.26	3.01	3.39	4.52	0.63	1.26	0.63	1.26	+4 +6 °C
NEXO 100 FVL	1.60	2.13	3.20	4.26	4.79	6.39	0.91	1.82	0.83	1.66	
Display area											
NEXO 110 D	3.00	4.01	6.01	8.01	9.01	12.02	1.87	3.74	1.59	3.18	+2 +4 °C
NEXO 110 DL	3.57	4.76	7.13	9.51	10.70	14.27	2.23	4.46	1.86	3.72	
NEXO 110 M	2.44	3.26	4.88	6.51	7.32	9.77	1.51	3.02	1.32	2.64	+0 +2 °C
NEXO 110 ML	3.00	4.01	6.01	8.01	9.01	12.02	1.87	3.74	1.59	3.18	
NEXO 110 FV	1.32	1.76	2.63	3.51	3.95	5.27	0.79	1.58	0.78	1.56	+4 +6 °C
NEXO 110 FVL	1.88	2.51	3.76	5.01	5.64	7.52	1.15	2.30	1.05	2.10	

VORTEX

MULTIDECK CABINET FOR MEAT, SAUSAGES AND DELICATESSEN

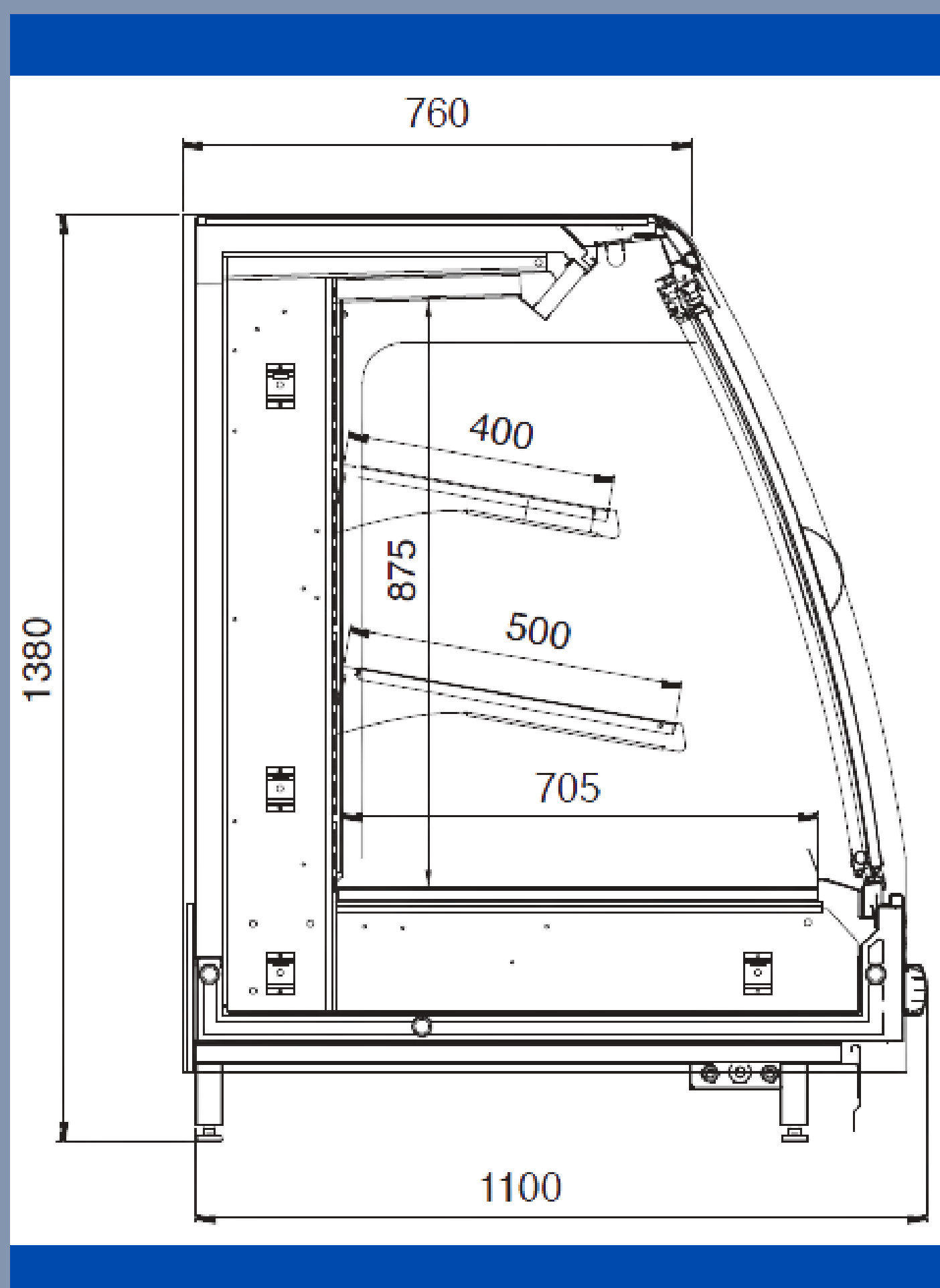


Remote cabinet
 Semi-vertical multideck cabinet
 Possibility to assemble as an island type
 High refrigeration output, low energy consumption
 Equal air flow between display shelves
 Ergonomic design
 RAL color choices as per customer request

OPTIONAL ACCESSORIES:

Lighting below display shelves
 Night blind / Day cover application

Cabinet length without endwalls (mm)	1875	2500	3750	2076 CE
Display area (m ²)	3.87	5.16	7.74	3.87
Operating voltage	230 V/50 Hz			
Working temperature	+2 / +4 °C		0 / +2 °C	



VENTO

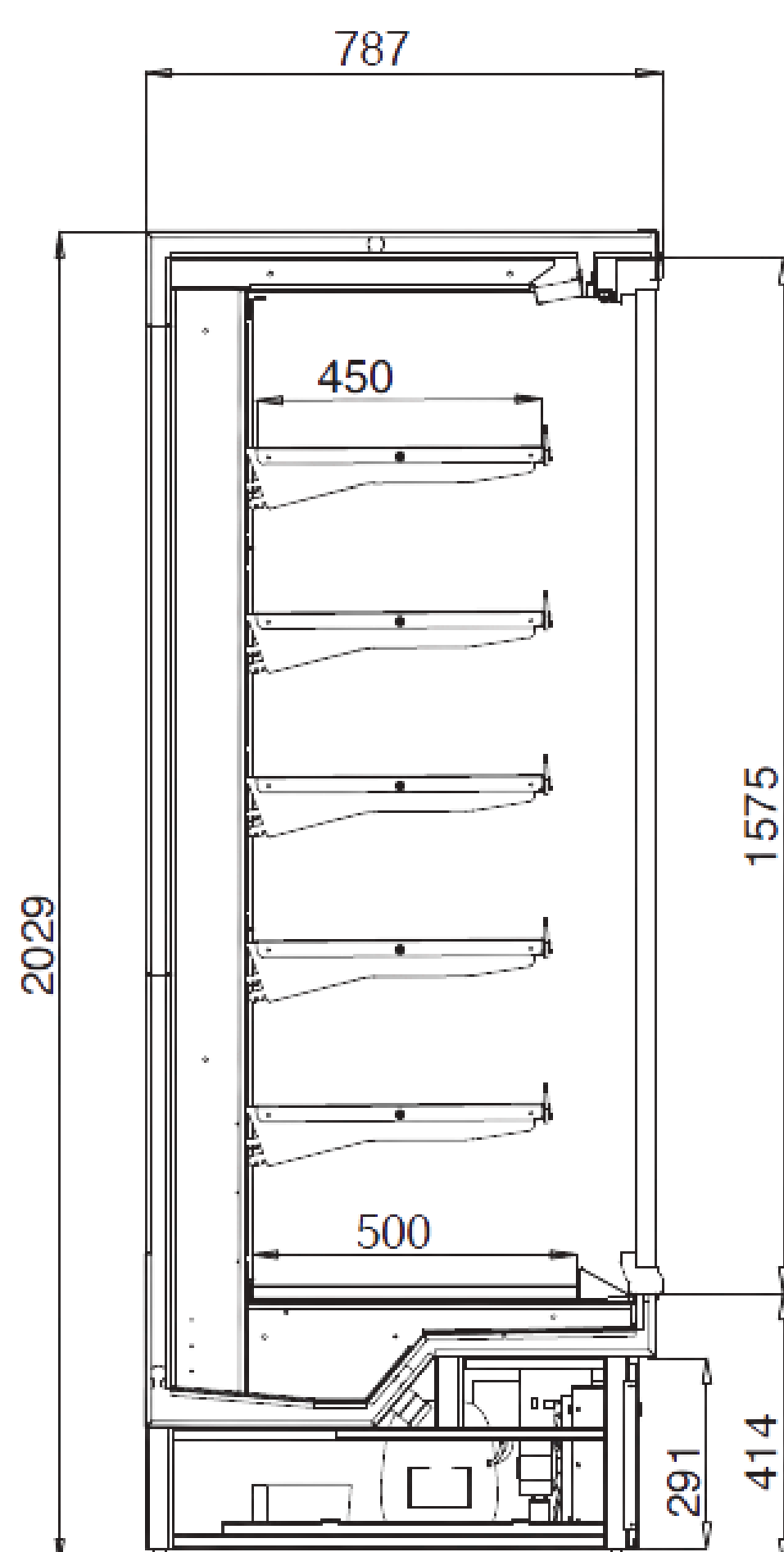
MULTIDECK CABINET FOR DAIRY, MEAT AND BEVERAGE



Plug-in cabinet R 290
Equal air flow between the display shelves
High refrigeration output, low energy consumption
Ergonomic design
Easy maintenance and cleaning
RAL color choices for decoration
Door glasses are made out of tapered glass

OPTIONAL ACCESSORIES:

Additional shelving
Plexiglass shelf barriers
Undershelf lighting (LED)



Cabinet length without endwalls (mm)	937	1250	1875	2500
Display area (m ²)	1.83	2.44	3.66	4.88
Operating voltage	230 V/50 Hz			
Working temperature	0 / +2 °C		+2 / +4 °C	

VENTO ANG

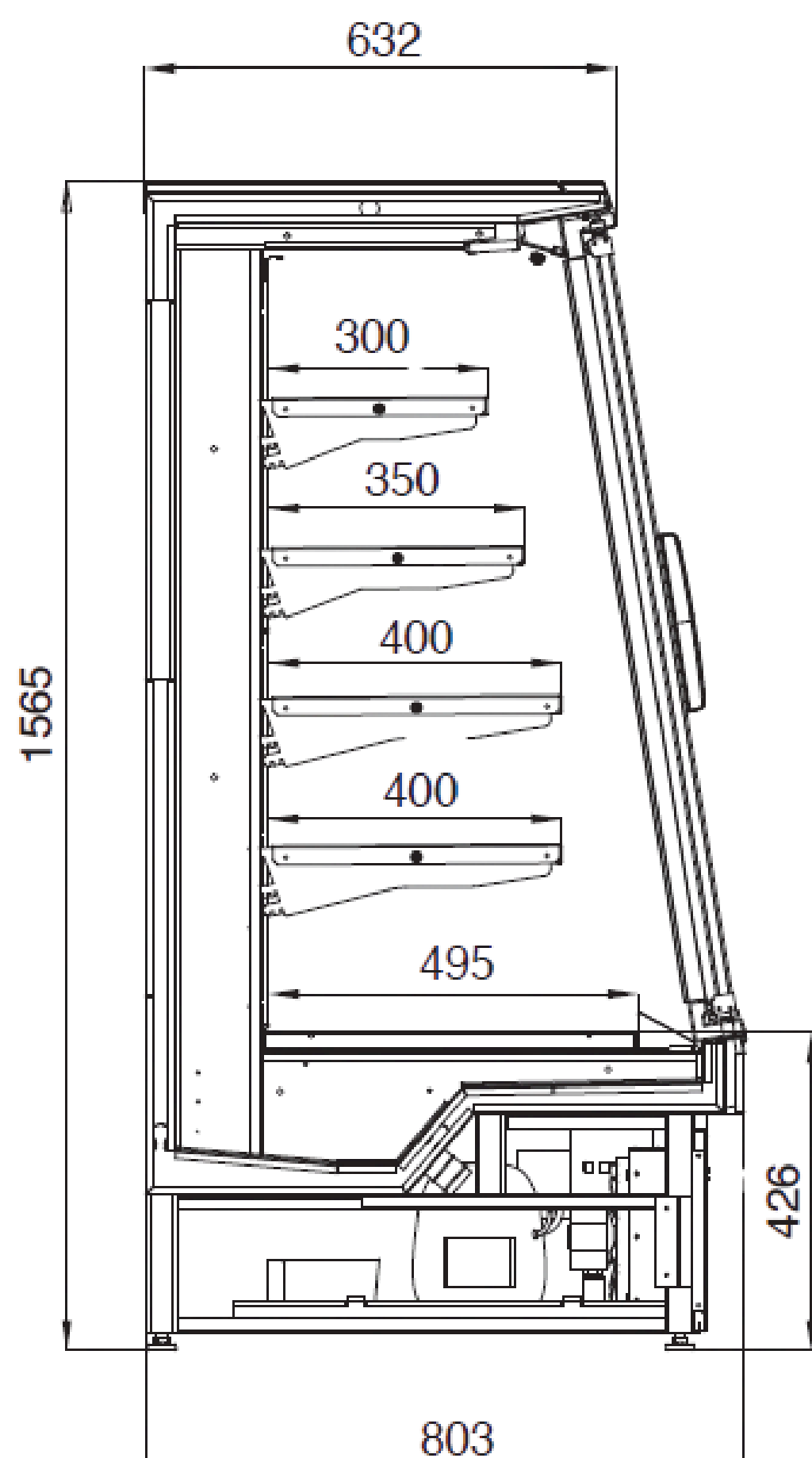
MULTIDECK CABINET FOR DAIRY, MEAT AND BEVERAGE



Plug-in cabinet, R290
Semi Vertical multideck cabinet
Possibility to assemble as an island type
Equal air flow between the display shelves
High refrigeration output, low energy consumption
Ergonomic design
Easy maintenance and cleaning
RAL color choices for decoration
Door glasses are made out of tepered glass

OPTIONAL ACCESSORIES:

Additional shelving
Plexiglass shelf barriers
Undershelf lighting (LED)



Cabinet length without endwalls (mm)	937	1250	1875	2500
Display area (m ²)	1.83	2.44	3.66	4.88
Operating voltage	230 V/50 Hz			
Working temperature	0 / +2 °C		+2 / +4 °C	



FROZEN DISPLAY CABINET

POLAR

ICEON

ARCO

SORA

VEXA

ZENTO

POLAR

ISLAND FREEZERS FOR FRESH AND FROZEN PRODUCTS

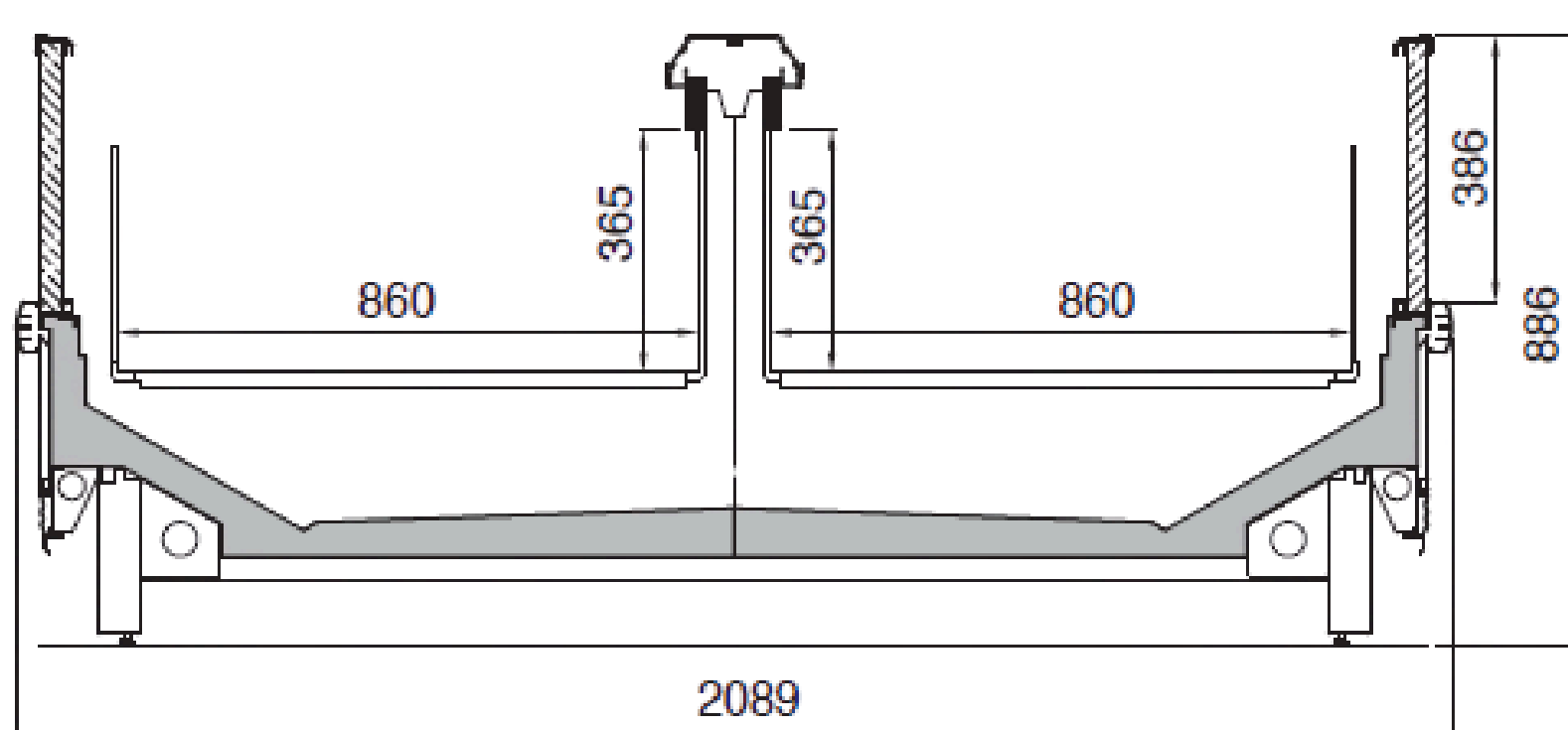


Remote cabinet
 Modern design and functional details
 CE (End module) application
 High Construction and performance quality
 Wide presentation area and loading space
 0°C, -20°C, 24°C, three different cooling application
 Variable color options
 Inner lighting

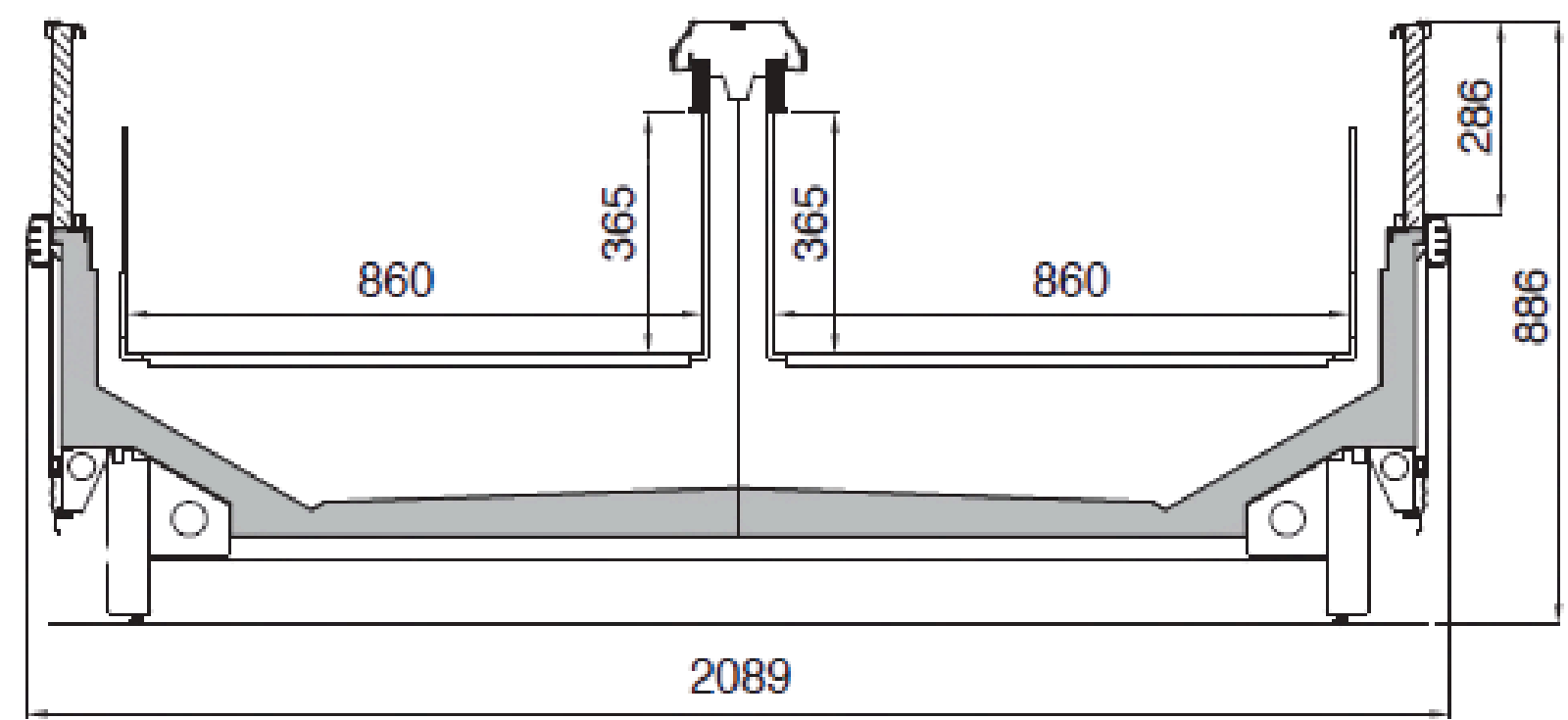
OPTIONAL ACCESSORIES:

Sliding glass cover
 With or without lighting, single or double-layer ambient presentation shelf
 Night cover application
 Height-adjustable base wire
 Wire divider

POLAR HFG



POLAR LFG



	Cabinet length without endwalls	Display area (m ²)	Cubic capacity (dm ³)	Working temperature
POLAR LFG/HFG	1875, 2500, 3750	3.23, 4.30, 6.45	1177, 1570, 2354	0 / 2 °C -18 / -20 °C -22 / -24 °C

ICEON

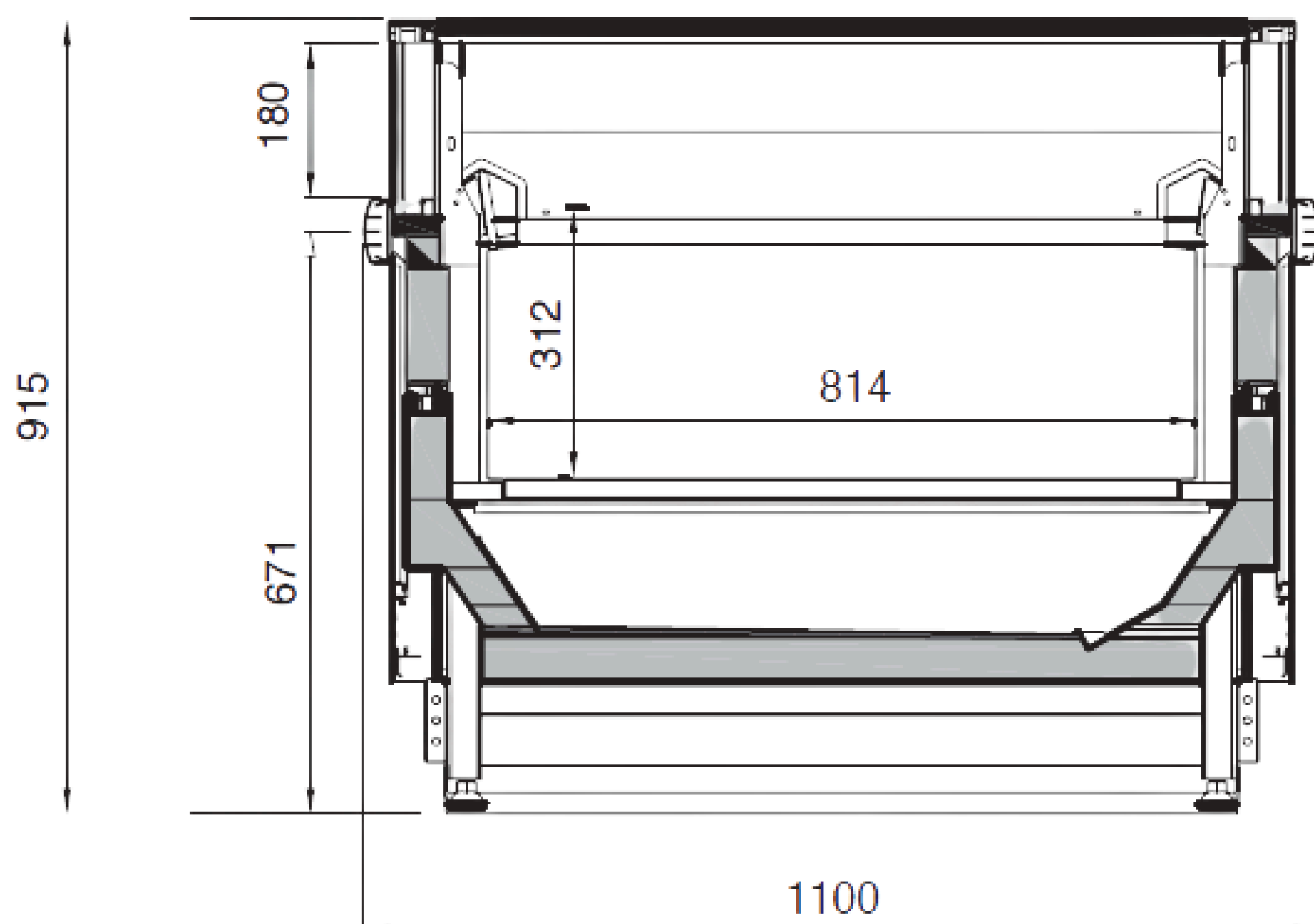
ISLAND FREEZERS FOR FRESH AND FROZEN PRODUCTS



Remote cabinet
Modern design and functional details
High Construction and performance quality
0°C, -20°C, 24°C, three different cooling application
Variable color options

OPTIONAL ACCESSORIES:

Sliding glass cover
With or without lighting, single or double-layer ambient presentation shelf
Night cover application
Height-adjustable base wire
Wire divider



Cabinet length without endwalls (mm)	1875	2500	3750
Display area (m ²)	1.53	2.04	3.06
Cubic capacity (dm ³)	476	635	952
Operating voltage	230 V/50 Hz		
Working temperature	0 / +2 °C -18 / -22 °C -22 / -24 °C		

ARCO

FROZEN DISPLAY CABINET



Remote cabinet.
Modern design and functional details
Cabinet construction built to highest quality standards
High performance, large display, and loading capacity
Color choice according to decoration
Half glass door and well combination

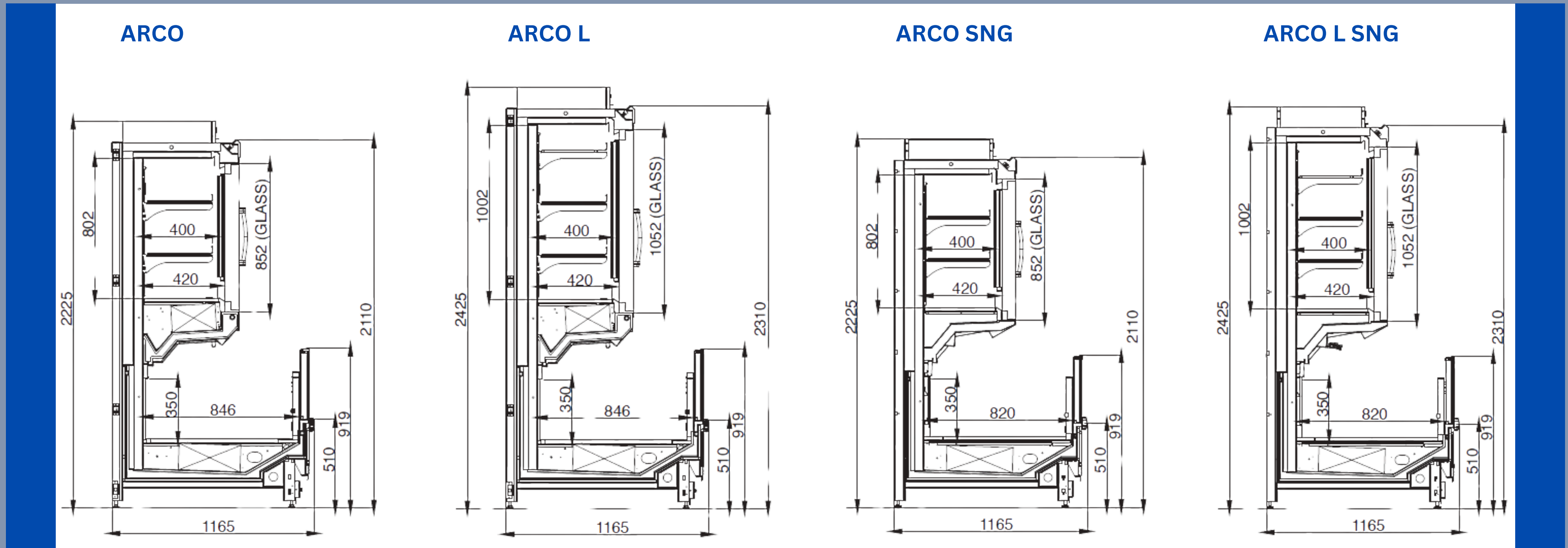
OPTIONAL ACCESSORIES:

Extended canopy lighting
LED lighting
Sliding lids for well section
Height-adjustable display grid
Wire dividers



ARCO

FROZEN DISPLAY CABINET



	Cabinet length without endwalls (mm)	Display area (m ²)		Cubic capacity (dm ³)		Working temperature
		üst kısım upper section	alt kısım well section	üst kısım upper section	alt kısım well section	
ARCO	2500	3.05	2.12	840	740	-18 / -24 °C
ARCO	3750	4.58	3.18	1260	1110	
ARCO L	2500	4.05	2.12	1050	740	
ARCO L	3750	6.09	3.18	1575	1110	
ARCO SNG	2500	3.05	2.05	840	700	
ARCO SNG	3750	4.58	3.09	1260	1050	
ARCO L SNG	2500	4.05	2.05	1050	700	
ARCO L SNG	3750	6.09	3.09	1575	1050	

SORA

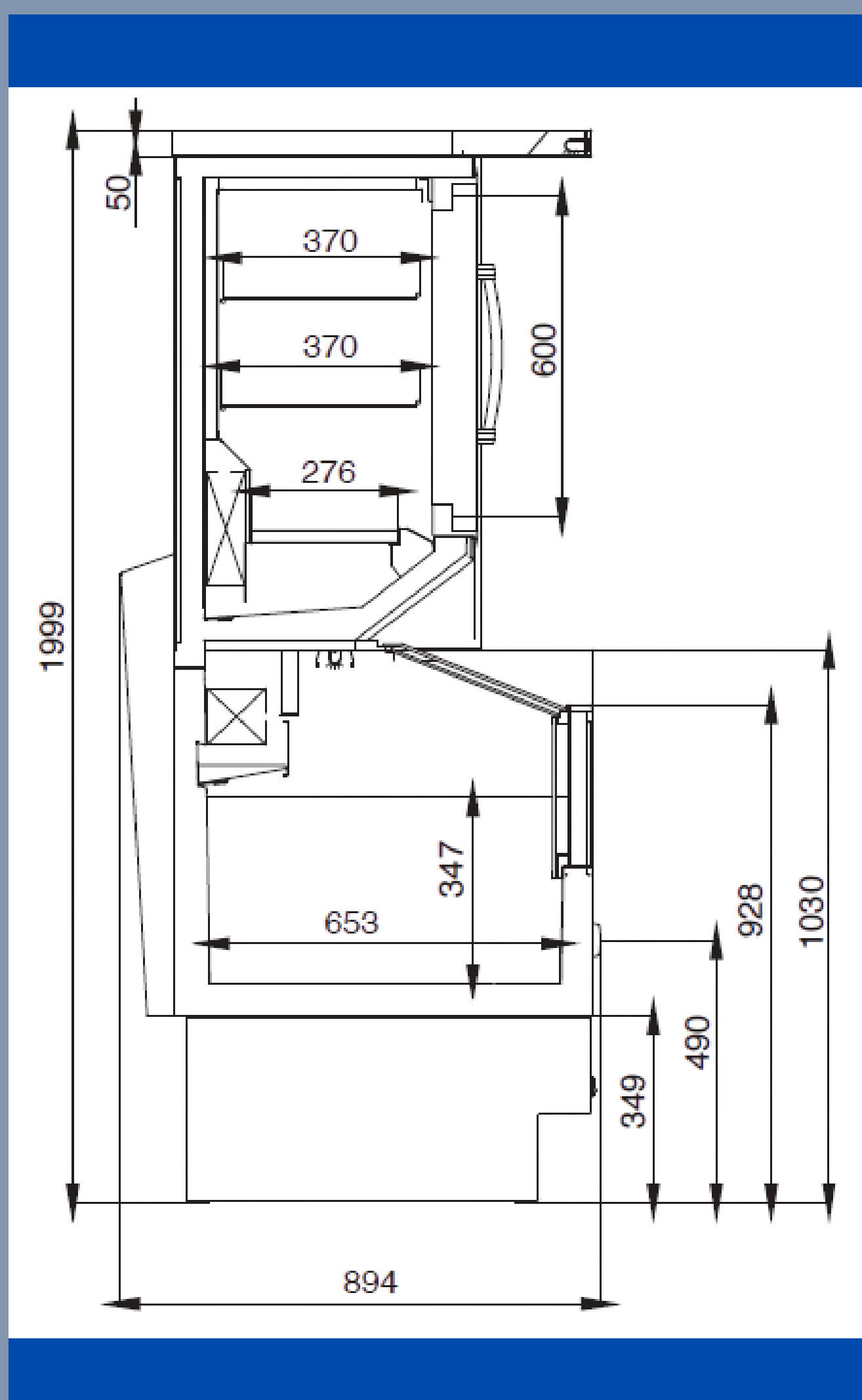
FROZEN DISPLAY CABINET



Plug-in cabinet
 3-4 doors versions
 Modern design and functional details
 Cabinet construction is built to the highest quality standards
 High performance and loading capacity
 Color choice according to decoration.

OPTIONAL ACCESSORIES:

Sliding glass door well section
 Height-adjustable display grid.
 Wire dividers



Lenght with endwall (mm)		Temperature Range	
2500		-18 / -24 °C	
Class according to (EN23953-2)		TDA (according to EN23953-2)	
3L1		1,03	
Rating Power (W)		Defrosting Power (W)	
top	bottom	top	bottom
1170	716	1457	1017

VEXA

VERTICAL BEVERAGE COOLER AND FROZEN FOOD CABINET

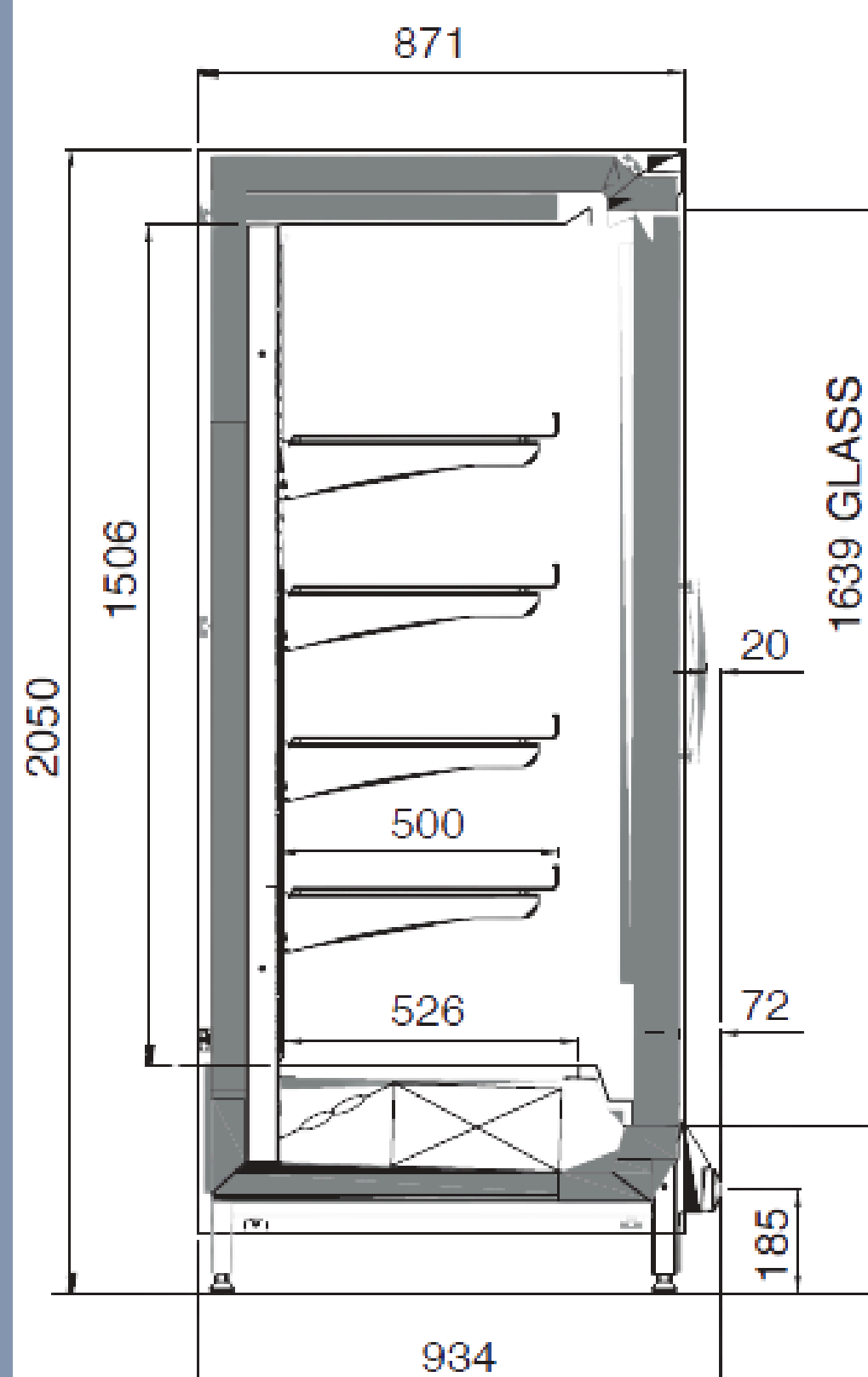


Remote cabinet
2,3,4,5 doors versions
4/5 display shelves
Matt aluminium door and door frames
Frames with heater for F-FL deep-freeze models

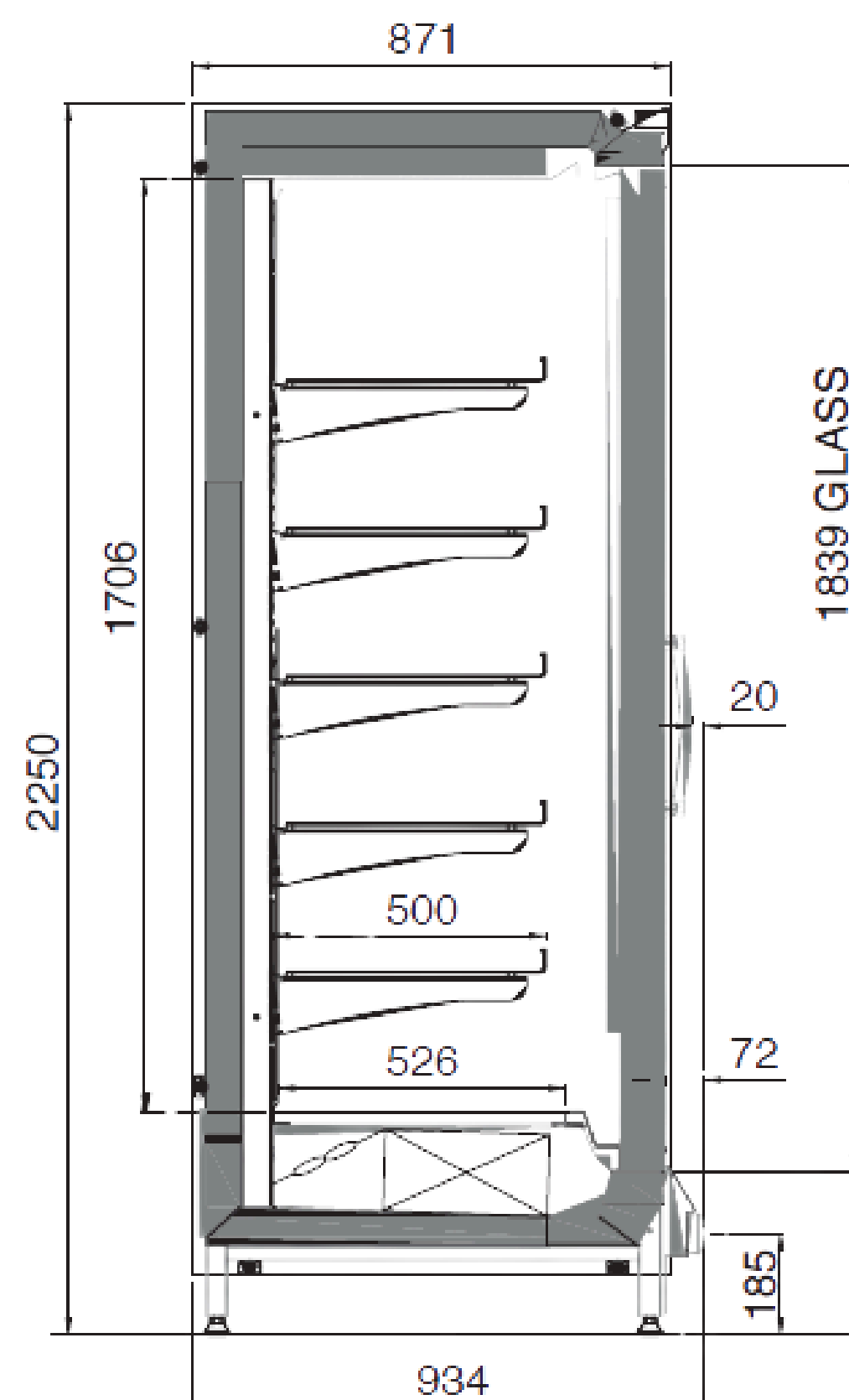
OPTIONAL ACCESSORIES:

Glazed sidewalls
Base display grid
Base display grid basket
Wire divider

VEXA F/B



VEXA FL / BL



Doors	2	3	4	5
Cabinet length without endwalls (mm)	1562	2343	3124	3898
Display area (m ²)	VEXA F	4.73	7.09	9.45
	VEXA B	4.73	7.09	9.45
Net capacity	VEXA FL	5.51	8.26	11.02
	VEXA BL	5.51	8.26	11.02
Working temperature	VEXA F	-18 / -22 °C		
	VEXA FL	-18 / -22 °C		-20 / -24 °C
Operating voltage	VEXA B	+2 / +4 °C		
	VEXA BL	+2 / +4 °C		+6 / +8 °C
Operating voltage	230 V/50 Hz			

ZENTO

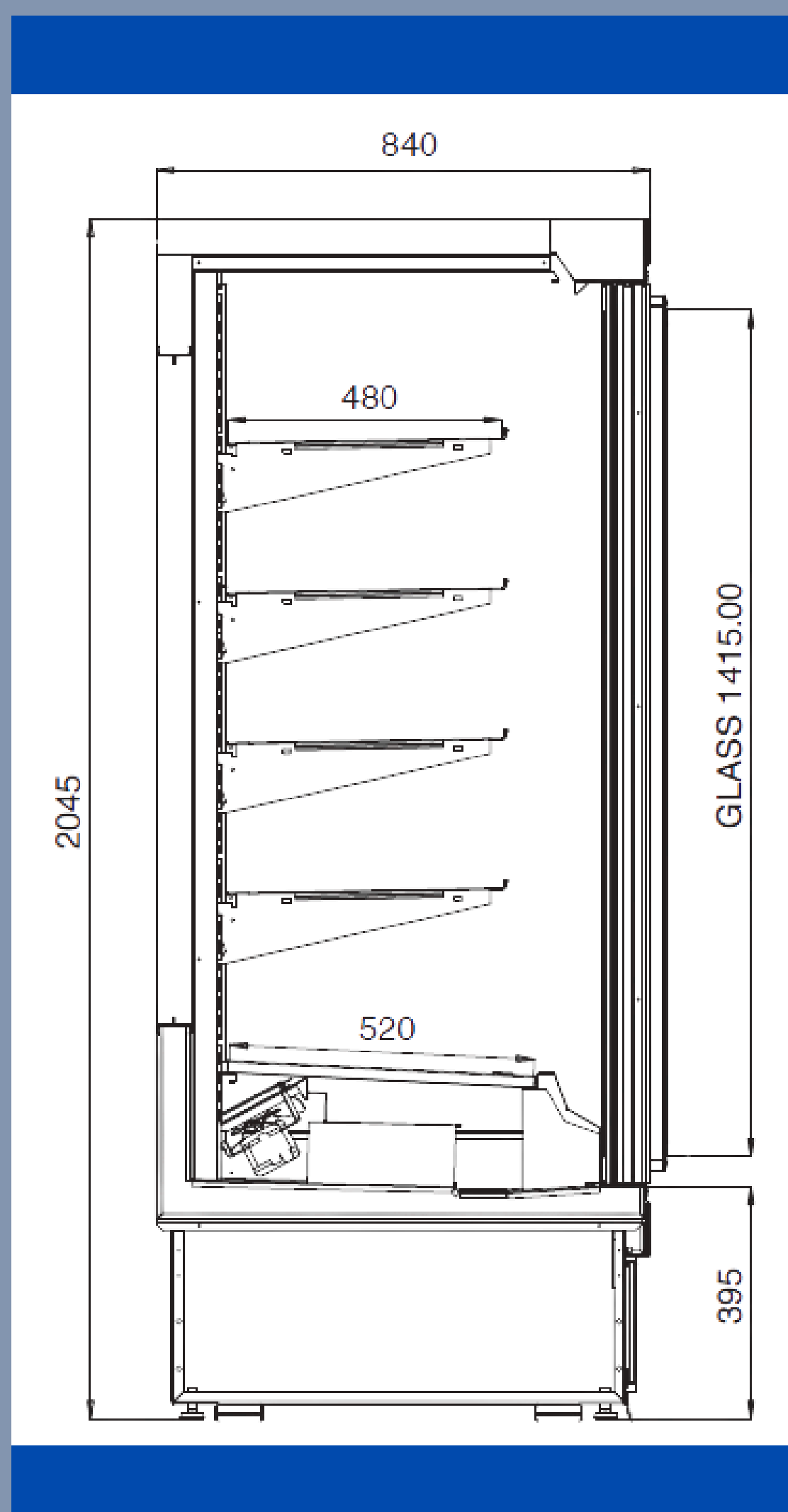
FROZEN DISPLAY CABINET



Plug-in cabinet R 290
 2, 3 doors versions
 Modern design and functional details
 Cabinet construction is built to the highest
 quality standards
 High performance, large display,
 and loading capacity
 Color choice according to decoration

OPTIONAL ACCESSORIES:

Base display grid
 Base display grid basket
 Wire divider



Cabinet length without endwalls (mm)	1250	1875	3750
Display area (m ²)	3	4.5	3.06
Cubic capacity (dm ³)	945	1418	952
Operating voltage	230 V/50 Hz		
Working temperature	-18 / -20 °C		



COOLING SYSTEMS

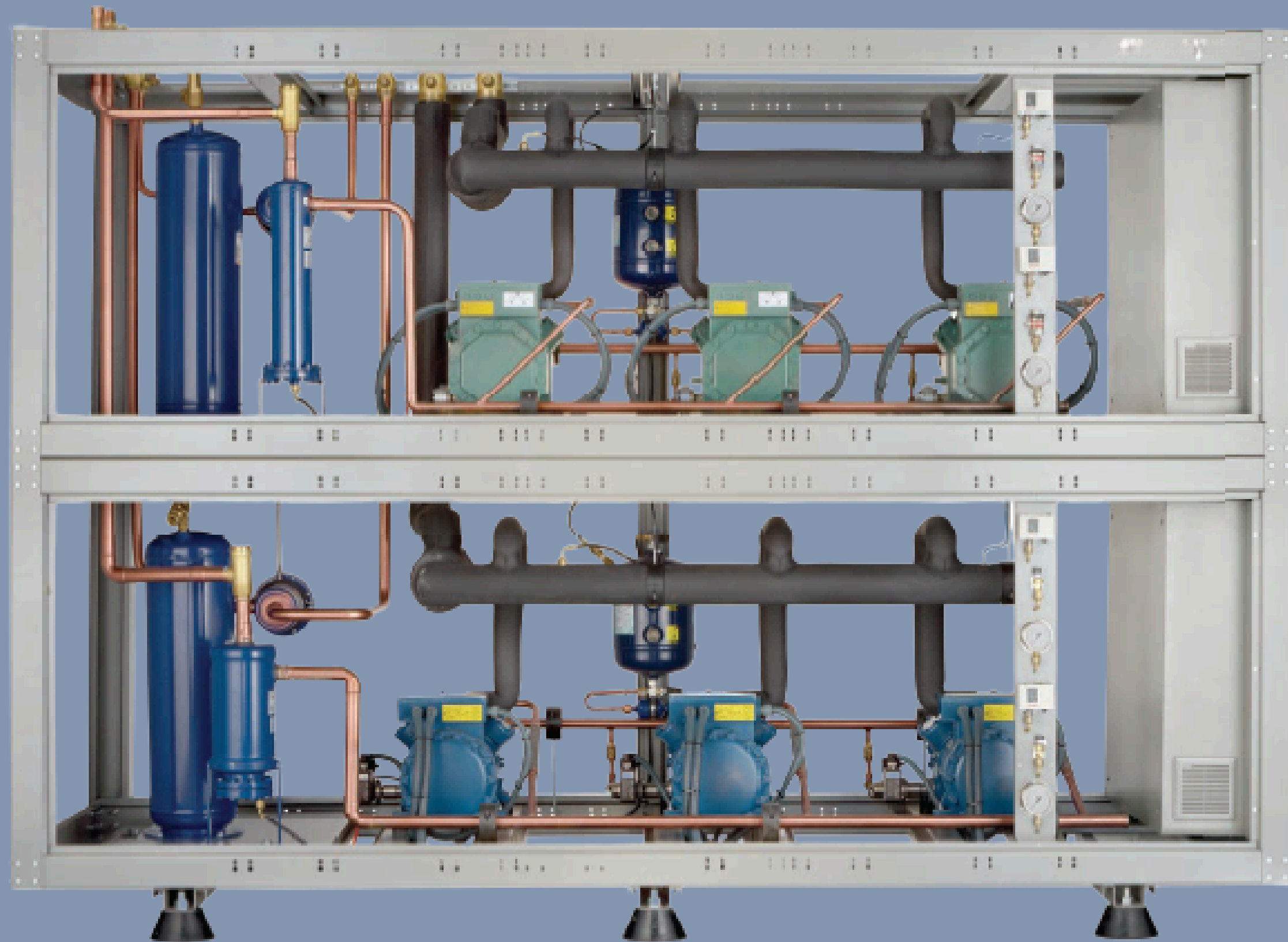
MULTI COMPRESSOR
SYSTEM

CONDENSING
UNIT

CONDENSERS

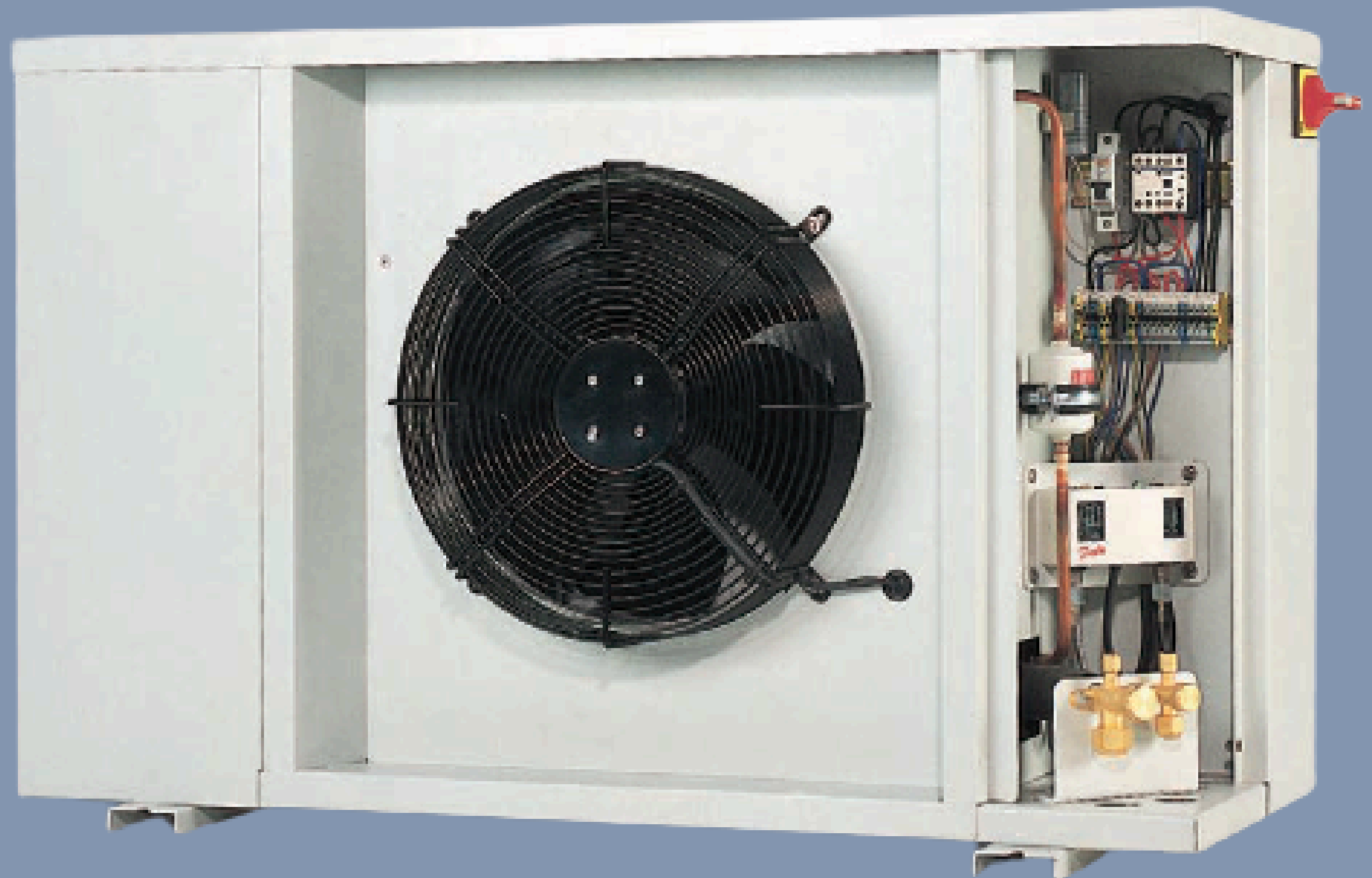
AIR COOLERS

MULTI COMPRESSOR SYSTEM



Multi Compressor Sets with range of capacity for Hypermarket, Supermarket and Cold Rooms
Performance guaranteed mass production
Design depend on project
DANFOSS, CAREL, ELREHA control system application
Due to the high operating costs it is important to prefer multi compressor sets
Small space requirement
Optimum dimensions and performance
Optimum COP and Energy Consumption
Production possibilities with hermetic, screw, semi hermetic and scroll compressors
R 404A, R134A, R407F refrigerant applications in production
Energy Saving Applications
Local and Optional Monitoring and Control

CONDENSING UNIT



CONDENSERS



AIR COOLERS



COLD ROOM PANELS



80,100,120,160 mm Standard panel thickness
Easy installation and dismantling
Stainless steel floor panels
Maximum energy saving due to its resistance to heat transfer
42 kg/m³ polyurethane injection
0.5 mm. PVC-coated or painted panel surface
RAL color choices for special applications



PVC rounded bottom corners



Bottom PVC "U" profile



Shelving systems



Monoray systems

DOORS

HINGED DOORS



HINGED DOORS WITH SLIDEWAY PASSAGE



SLIDING DOORS



SLIDING DOORS WITH SLIDEWAY PASSAGE



TO AND FRO





duztaS
refrigeration

www.duztas.com